

# CREEK BEACH

---

SURF

FLOOR PLANS

EMAAR



DUBAI CREEK  
HARBOUR

SURF AT  
CREEK BEACH

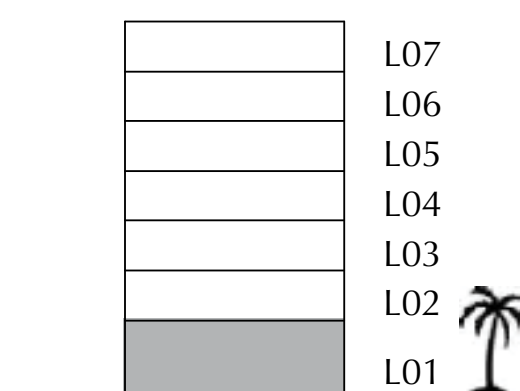
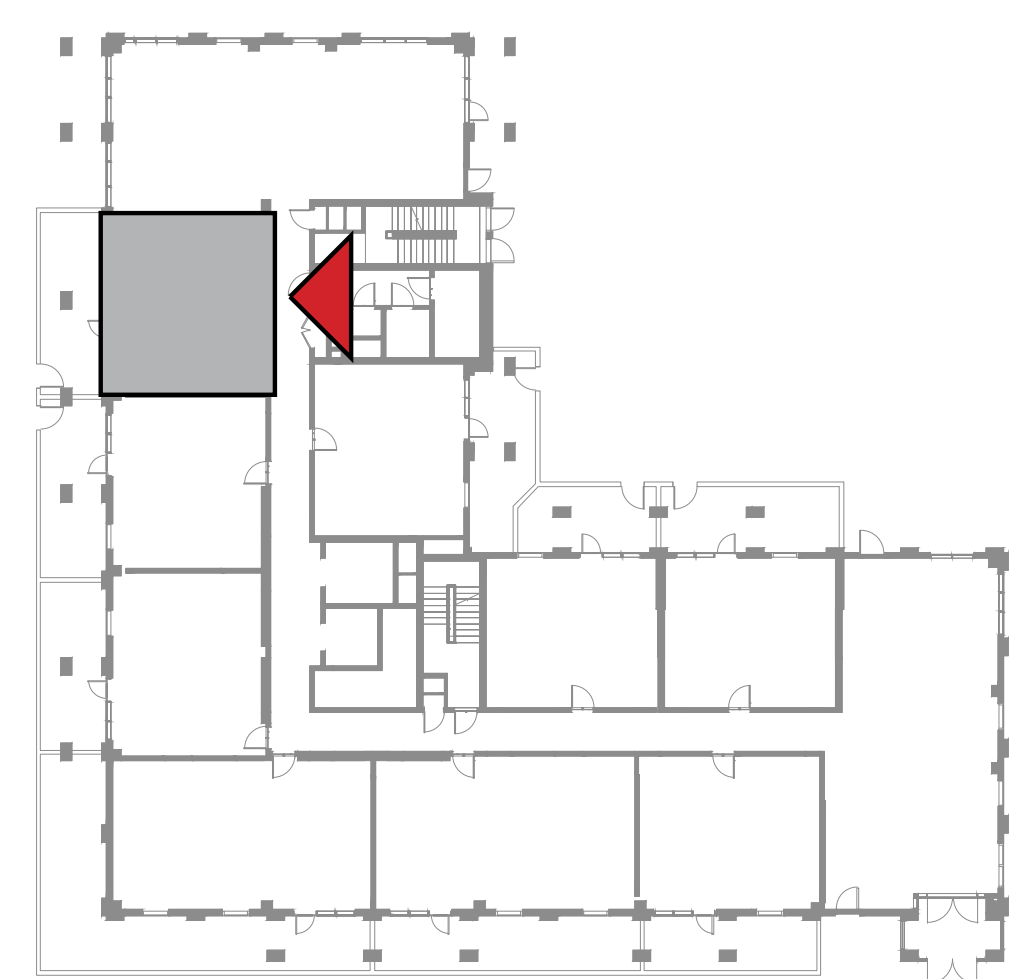
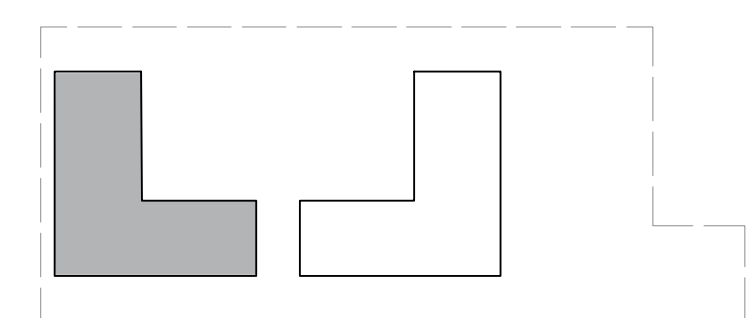
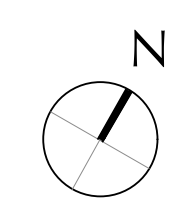
BUILDING 1

LEVEL 1

UNIT 101

1 BEDROOM

APARTMENT AREA	55.71 SQ.M.	599.66 SQ.FT.
BALCONY AREA	27.15 SQ.M.	292.24 SQ.FT.
TOTAL AREA	82.86 SQ.M.	891.90 SQ.FT.



FLOOR PLAN 1. All dimensions are in imperial and metric, and measured from finish to finish excluding construction tolerances. 2. All materials, dimensions, and drawings are approximate only. 3. Information is subject to change without notice, at developer's absolute discretion. 4. Actual area may vary from the stated area. 5. Drawings not to scale. 6. All images used are for illustrative purposes only and do not represent the actual size, features, specifications, fittings, and furnishings. 7. The developer reserves the right to make revisions / alterations, at it's absolute discretion, without any liability whatsoever.



DUBAI CREEK  
HARBOUR

SURF AT  
CREEK BEACH

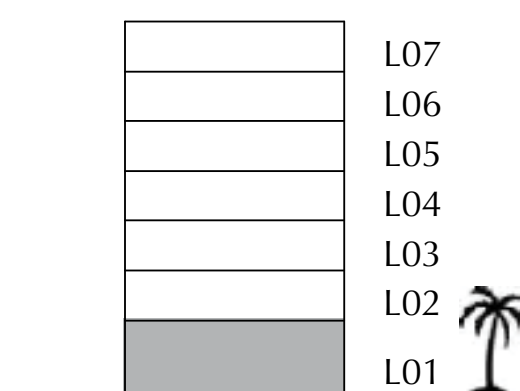
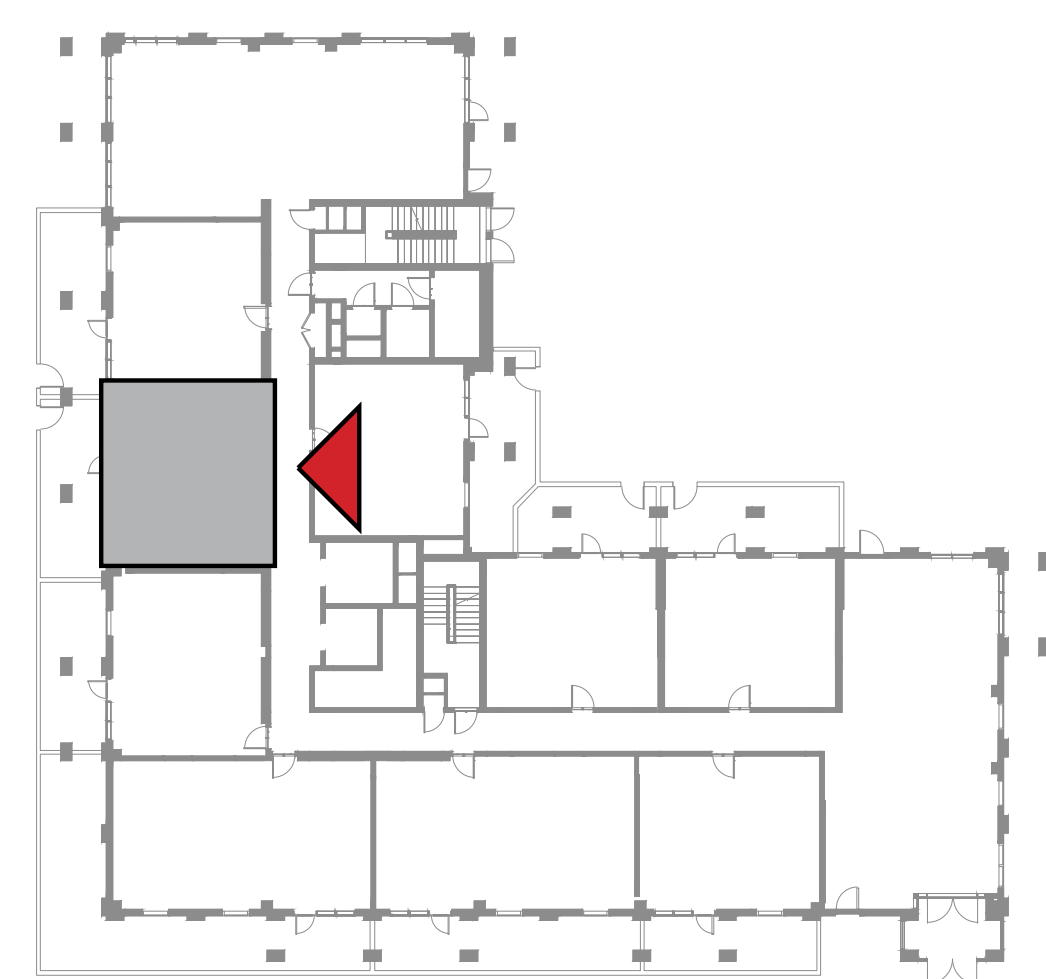
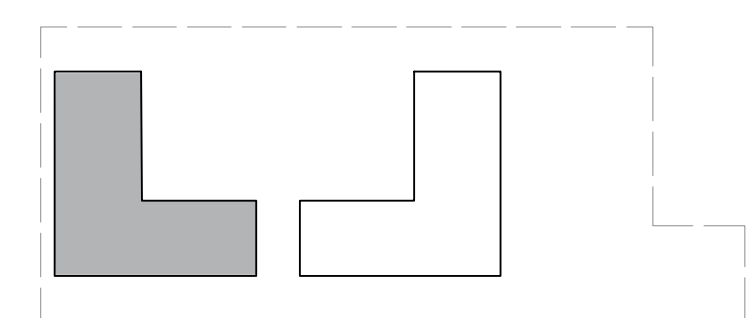
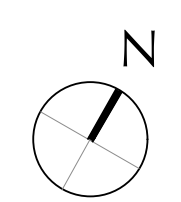
BUILDING 1

LEVEL 1

UNIT 102

1 BEDROOM

APARTMENT AREA	55.99 SQ.M.	602.67 SQ.FT.
BALCONY AREA	26.66 SQ.M.	286.97 SQ.FT.
TOTAL AREA	82.65 SQ.M.	889.64 SQ.FT.



FLOOR PLAN 1. All dimensions are in imperial and metric, and measured from finish to finish excluding construction tolerances. 2. All materials, dimensions, and drawings are approximate only. 3. Information is subject to change without notice, at developer's absolute discretion. 4. Actual area may vary from the stated area. 5. Drawings not to scale. 6. All images used are for illustrative purposes only and do not represent the actual size, features, specifications, fittings, and furnishings. 7. The developer reserves the right to make revisions / alterations, at it's absolute discretion, without any liability whatsoever.



DUBAI CREEK  
HARBOUR

SURF AT  
CREEK BEACH

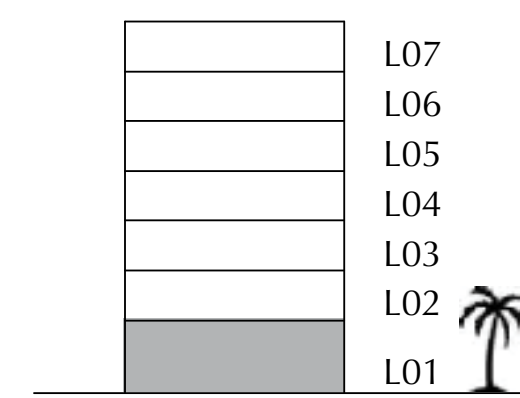
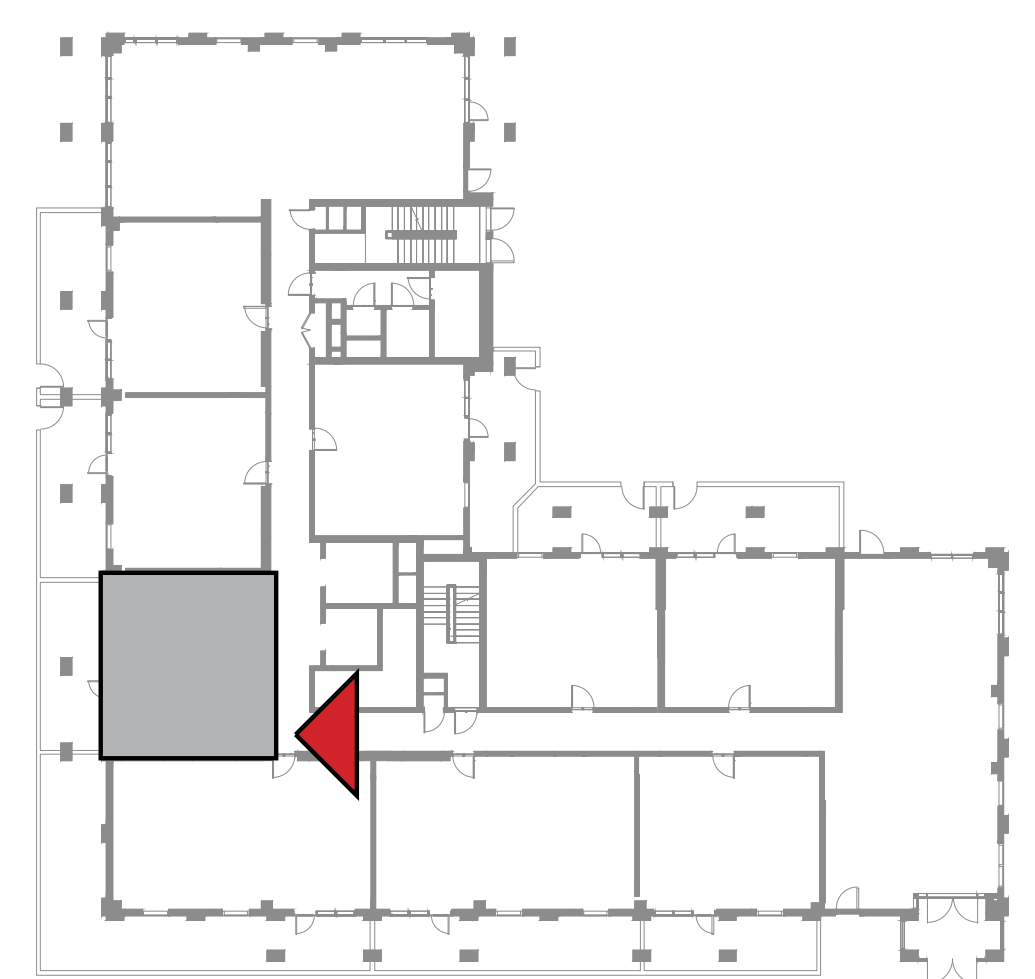
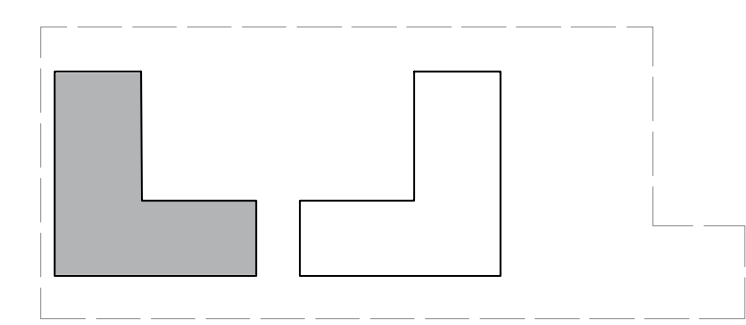
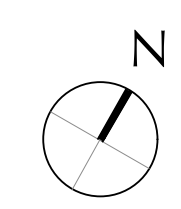
BUILDING 1

LEVEL 1

UNIT 103

1 BEDROOM

APARTMENT AREA	59.78 SQ.M.	643.47 SQ.FT.
BALCONY AREA	25.03 SQ.M.	269.42 SQ.FT.
TOTAL AREA	84.81 SQ.M.	912.89 SQ.FT.



FLOOR PLAN 1. All dimensions are in imperial and metric, and measured from finish to finish excluding construction tolerances. 2. All materials, dimensions, and drawings are approximate only. 3. Information is subject to change without notice, at developer's absolute discretion. 4. Actual area may vary from the stated area. 5. Drawings not to scale. 6. All images used are for illustrative purposes only and do not represent the actual size, features, specifications, fittings, and furnishings. 7. The developer reserves the right to make revisions / alterations, at it's absolute discretion, without any liability whatsoever.



DUBAI CREEK  
HARBOUR

SURF AT  
CREEK BEACH

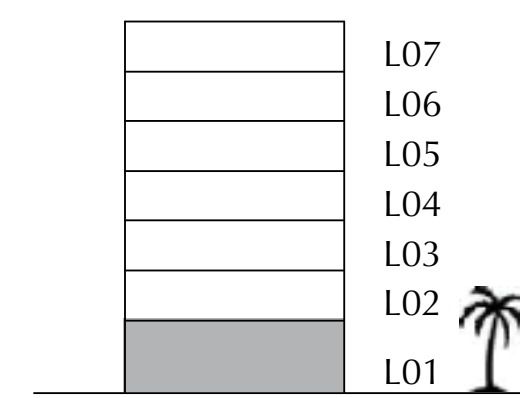
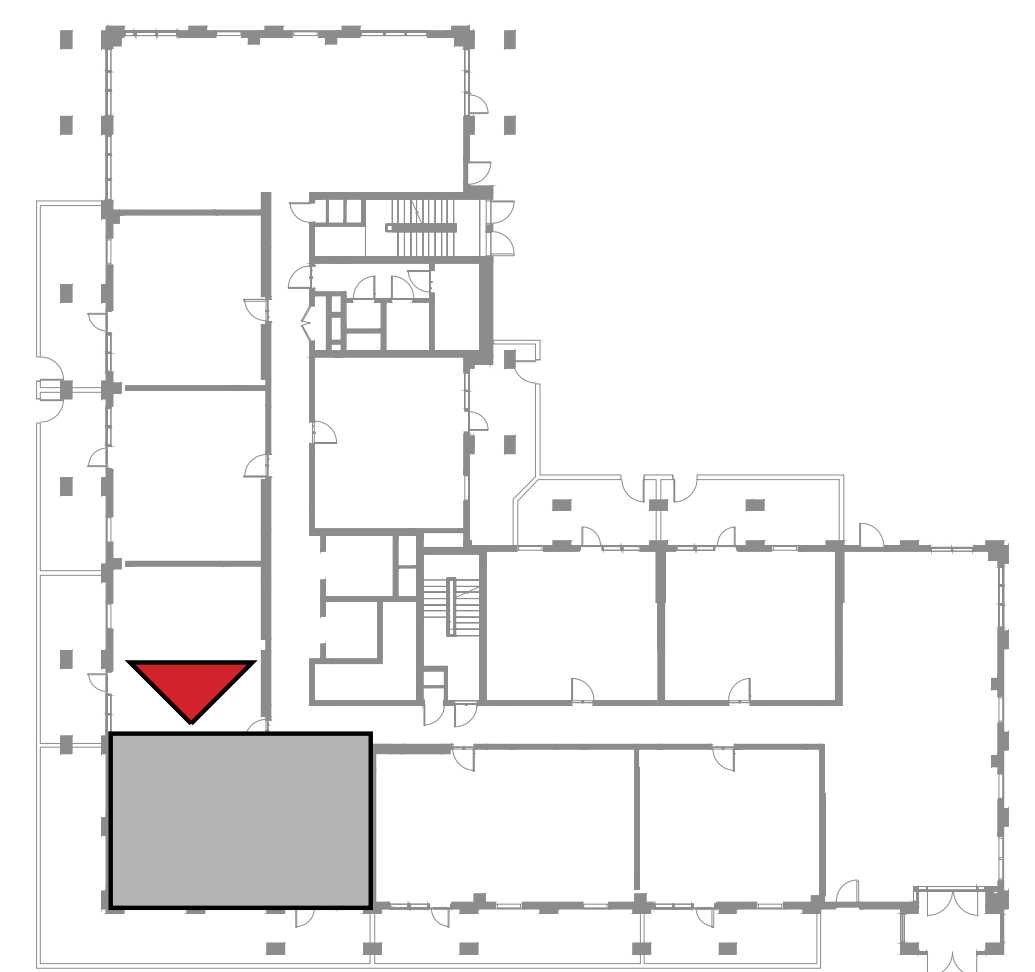
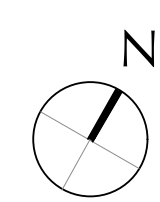
BUILDING 1

LEVEL 1

UNIT 104

2 BEDROOM

APARTMENT AREA	83.57 SQ.M.	899.54 SQ.FT.
BALCONY AREA	65.21 SQ.M.	701.91 SQ.FT.
TOTAL AREA	148.78 SQ.M.	1601.45 SQ.FT.



FLOOR PLAN 1. All dimensions are in imperial and metric, and measured from finish to finish excluding construction tolerances. 2. All materials, dimensions, and drawings are approximate only. 3. Information is subject to change without notice, at developer's absolute discretion. 4. Actual area may vary from the stated area. 5. Drawings not to scale. 6. All images used are for illustrative purposes only and do not represent the actual size, features, specifications, fittings, and furnishings. 7. The developer reserves the right to make revisions / alterations, at it's absolute discretion, without any liability whatsoever.



DUBAI CREEK  
HARBOUR

SURF AT  
CREEK BEACH

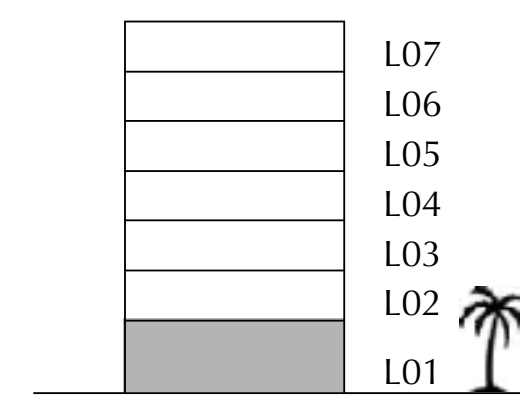
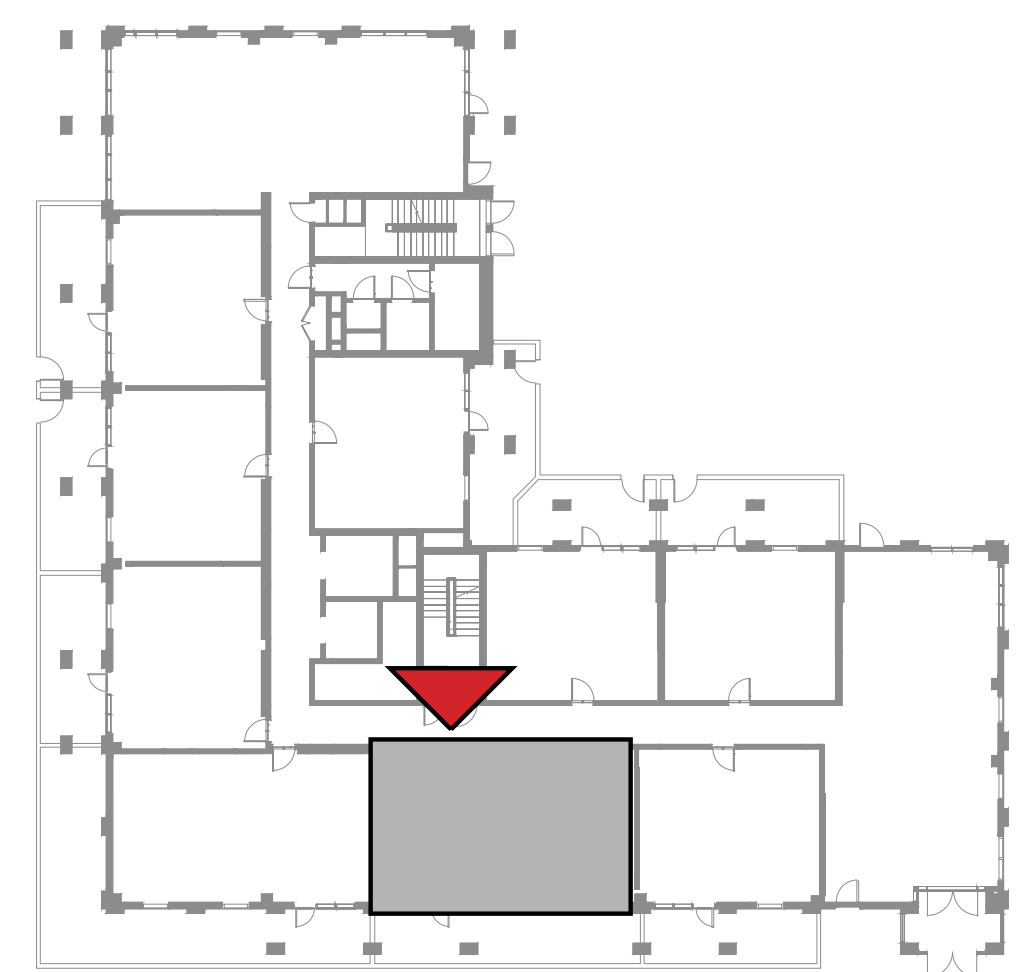
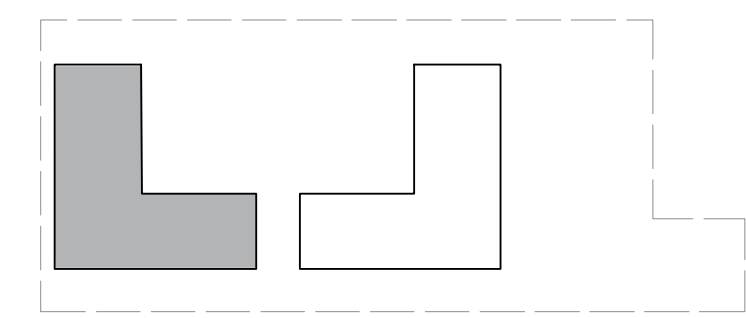
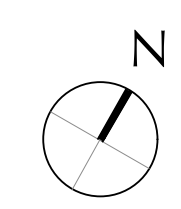
BUILDING 1

LEVEL 1

UNIT 105

2 BEDROOM

APARTMENT AREA	84.83 SQ.M.	913.10 SQ.FT.
BALCONY AREA	33.29 SQ.M.	358.33 SQ.FT.
TOTAL AREA	118.12 SQ.M.	1271.43 SQ.FT.



FLOOR PLAN 1. All dimensions are in imperial and metric, and measured from finish to finish excluding construction tolerances. 2. All materials, dimensions, and drawings are approximate only. 3. Information is subject to change without notice, at developer's absolute discretion. 4. Actual area may vary from the stated area. 5. Drawings not to scale. 6. All images used are for illustrative purposes only and do not represent the actual size, features, specifications, fittings, and furnishings. 7. The developer reserves the right to make revisions / alterations, at it's absolute discretion, without any liability whatsoever.



DUBAI CREEK  
HARBOUR

SURF AT  
CREEK BEACH

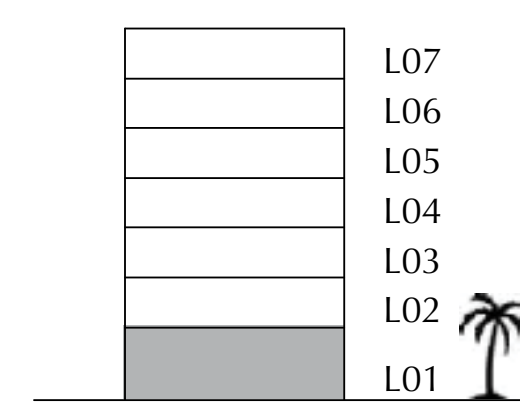
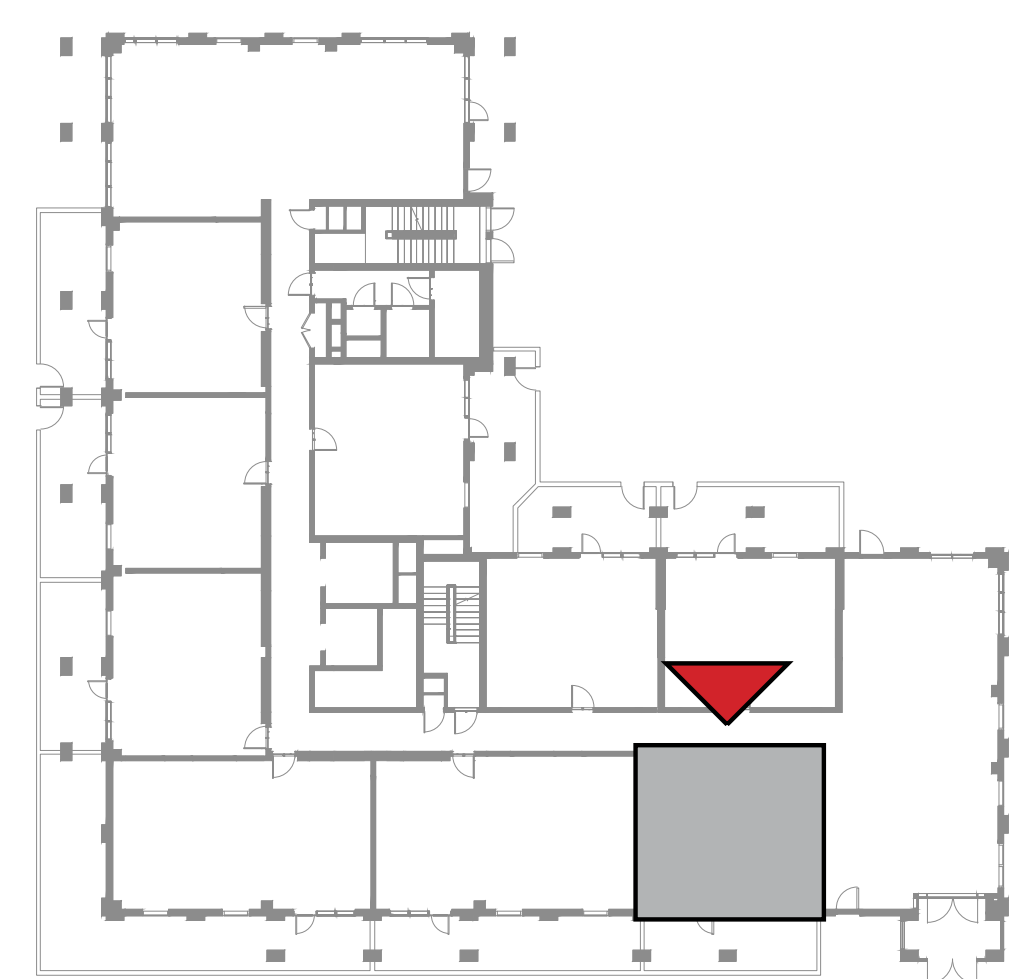
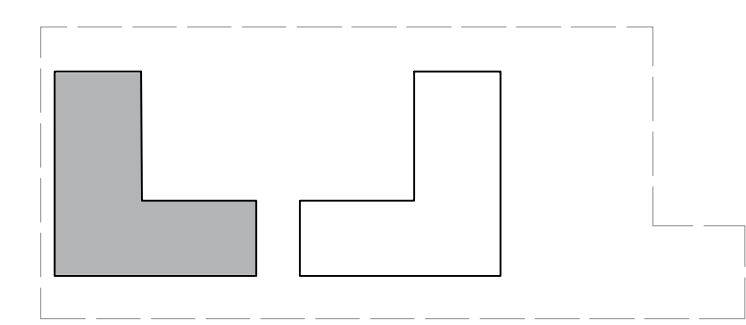
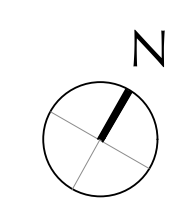
BUILDING 1

LEVEL 1

UNIT 106

1 BEDROOM

APARTMENT AREA	59.53 SQ.M.	640.78 SQ.FT.
BALCONY AREA	21.69 SQ.M.	233.47 SQ.FT.
TOTAL AREA	81.22 SQ.M.	874.25 SQ.FT.



FLOOR PLAN 1. All dimensions are in imperial and metric, and measured from finish to finish excluding construction tolerances. 2. All materials, dimensions, and drawings are approximate only. 3. Information is subject to change without notice, at developer's absolute discretion. 4. Actual area may vary from the stated area. 5. Drawings not to scale. 6. All images used are for illustrative purposes only and do not represent the actual size, features, specifications, fittings, and furnishings. 7. The developer reserves the right to make revisions / alterations, at it's absolute discretion, without any liability whatsoever.



DUBAI CREEK  
HARBOUR

SURF AT  
CREEK BEACH

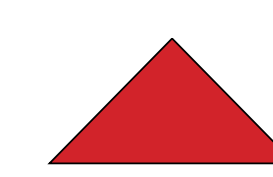
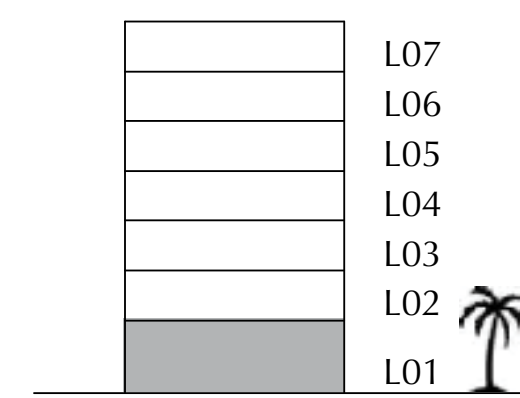
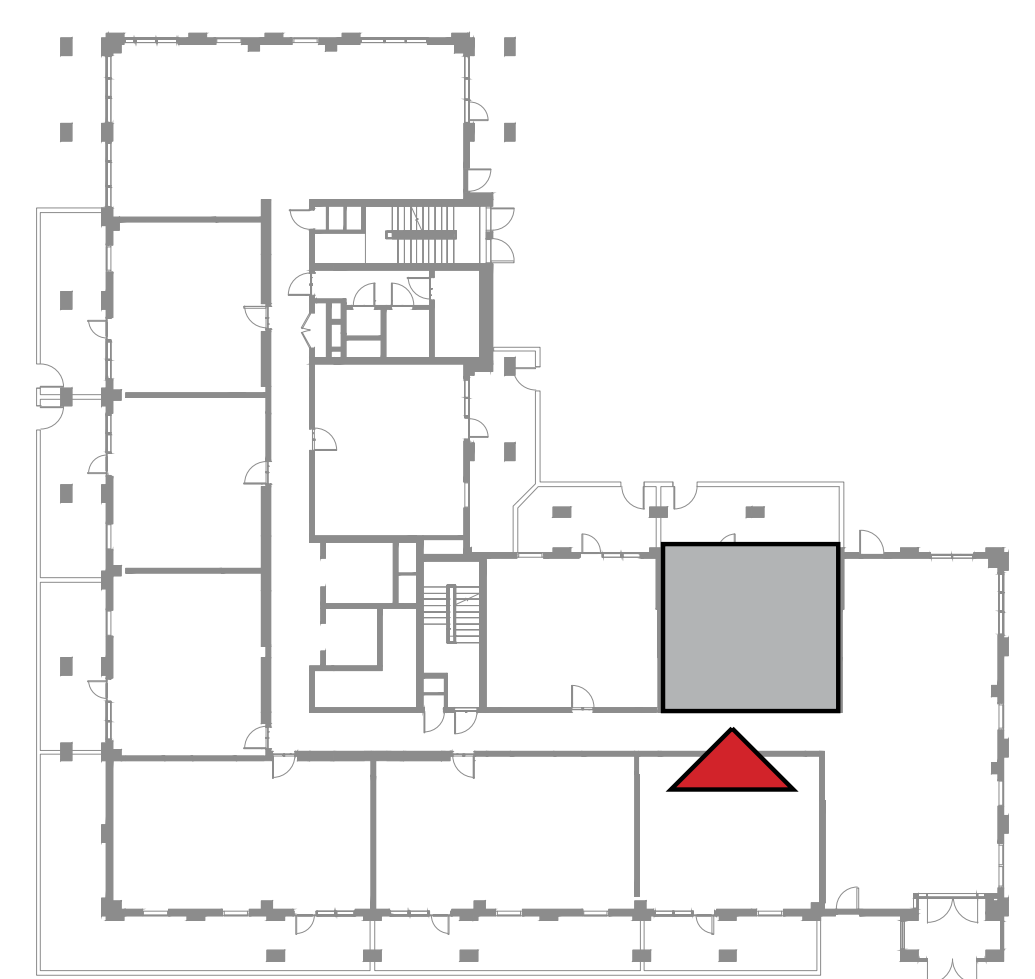
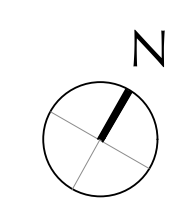
BUILDING 1

LEVEL 1

UNIT 107

1 BEDROOM

APARTMENT AREA	55.57 SQ.M.	598.15 SQ.FT.
BALCONY AREA	26.63 SQ.M.	286.64 SQ.FT.
TOTAL AREA	82.20 SQ.M.	884.79 SQ.FT.



FLOOR PLAN 1. All dimensions are in imperial and metric, and measured from finish to finish excluding construction tolerances. 2. All materials, dimensions, and drawings are approximate only. 3. Information is subject to change without notice, at developer's absolute discretion. 4. Actual area may vary from the stated area. 5. Drawings not to scale. 6. All images used are for illustrative purposes only and do not represent the actual size, features, specifications, fittings, and furnishings. 7. The developer reserves the right to make revisions / alterations, at it's absolute discretion, without any liability whatsoever.



DUBAI CREEK  
HARBOUR

SURF AT  
CREEK BEACH

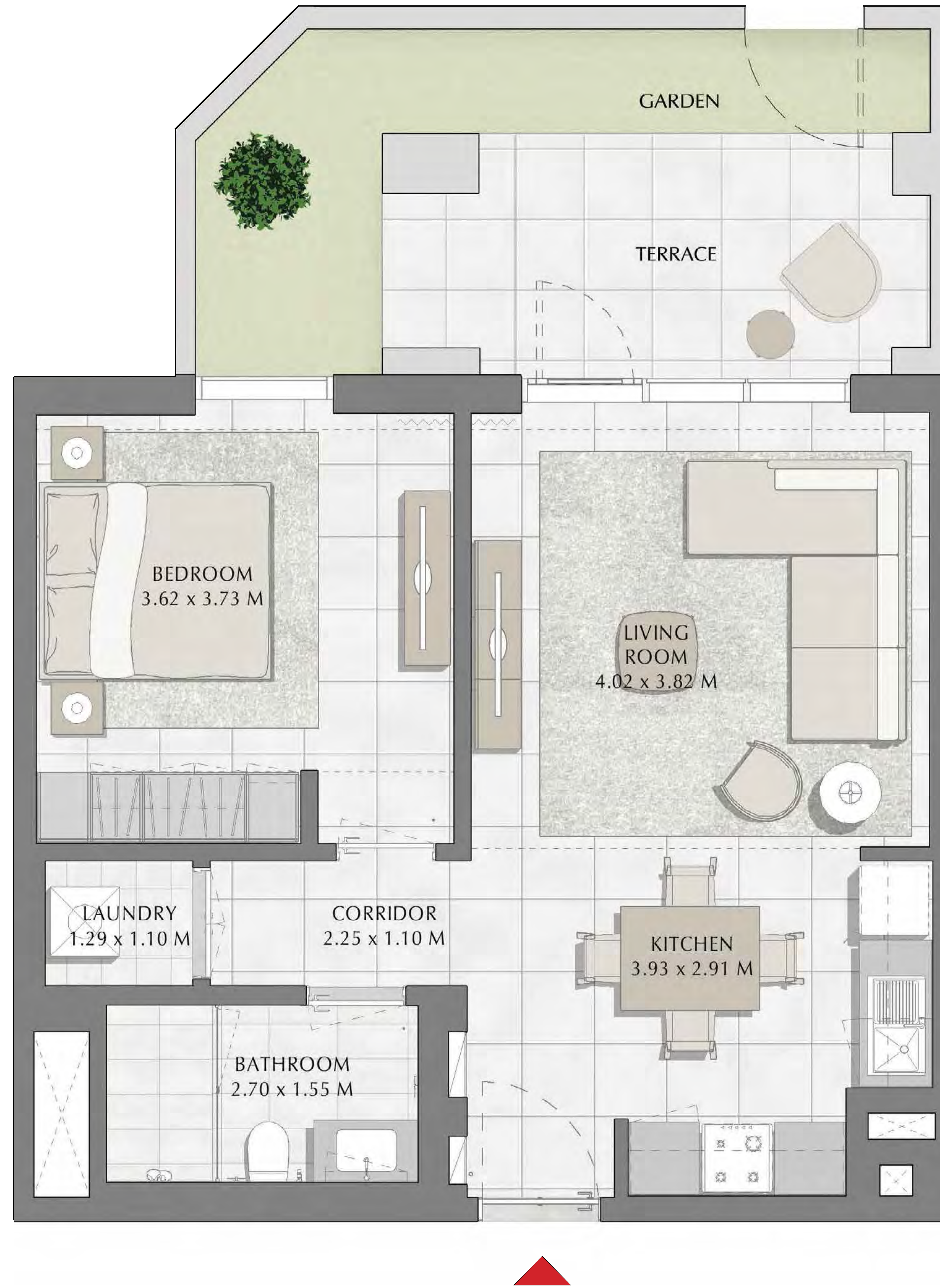
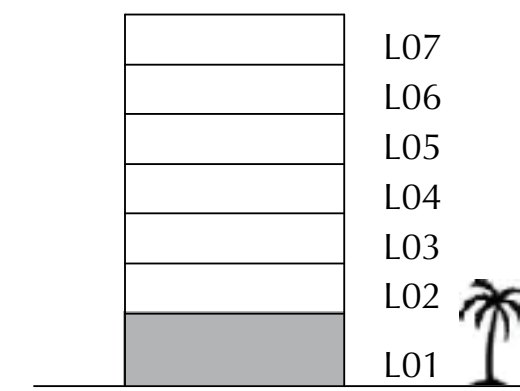
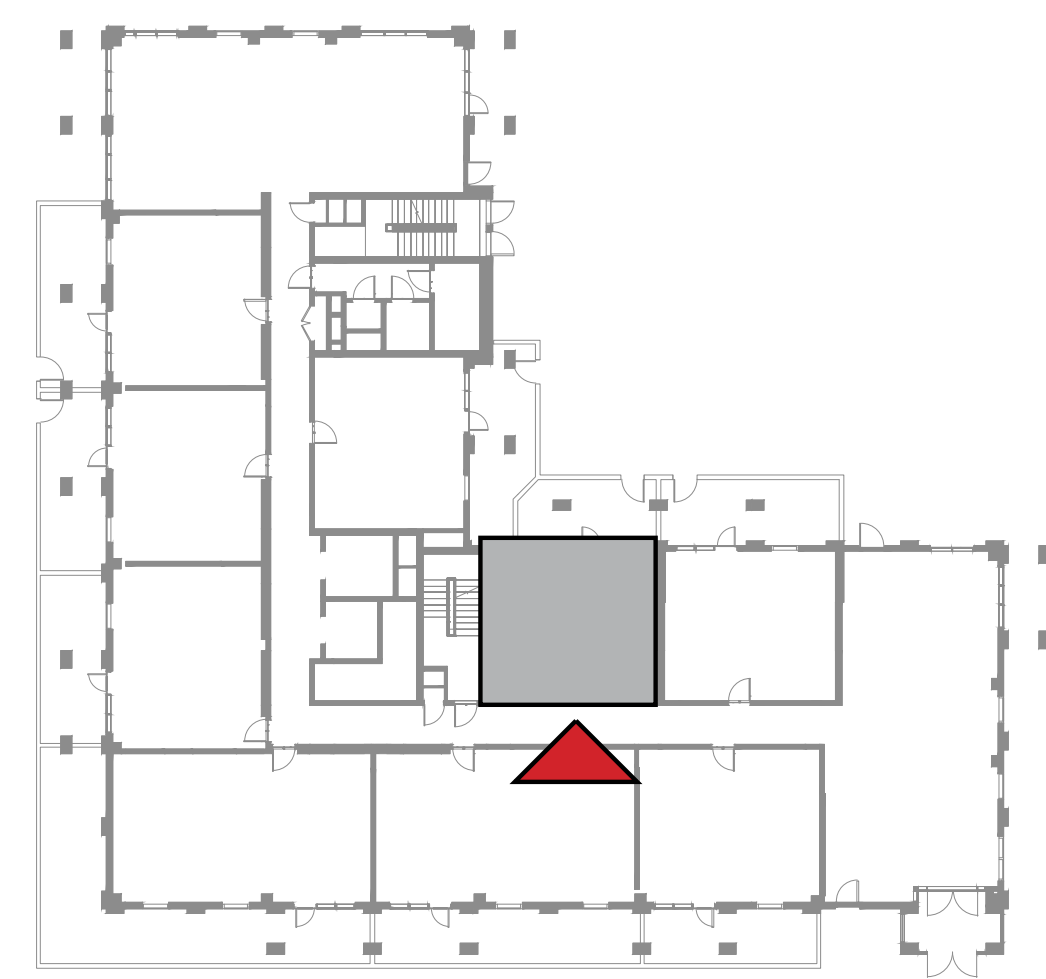
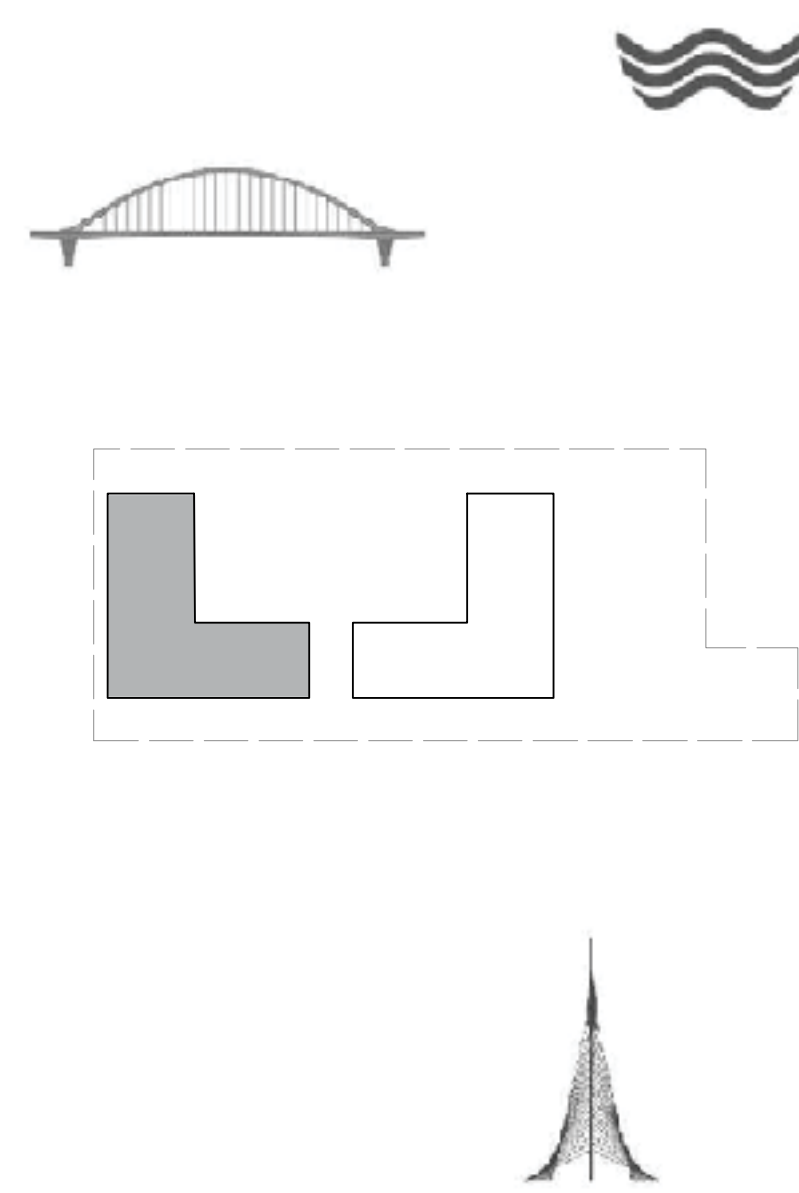
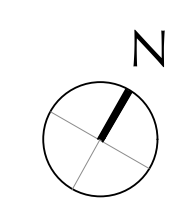
BUILDING 1

LEVEL 1

UNIT 108

1 BEDROOM

APARTMENT AREA	55.57 SQ.M.	598.15 SQ.FT.
BALCONY AREA	20.26 SQ.M.	218.08 SQ.FT.
TOTAL AREA	75.83 SQ.M.	816.23 SQ.FT.



FLOOR PLAN 1. All dimensions are in imperial and metric, and measured from finish to finish excluding construction tolerances. 2. All materials, dimensions, and drawings are approximate only. 3. Information is subject to change without notice, at developer's absolute discretion. 4. Actual area may vary from the stated area. 5. Drawings not to scale. 6. All images used are for illustrative purposes only and do not represent the actual size, features, specifications, fittings, and furnishings. 7. The developer reserves the right to make revisions / alterations, at it's absolute discretion, without any liability whatsoever.



DUBAI CREEK  
HARBOUR

SURF AT  
CREEK BEACH

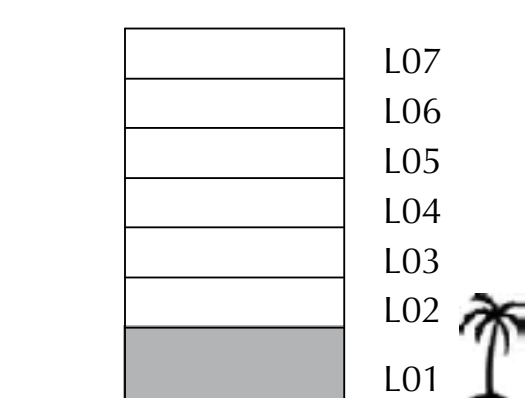
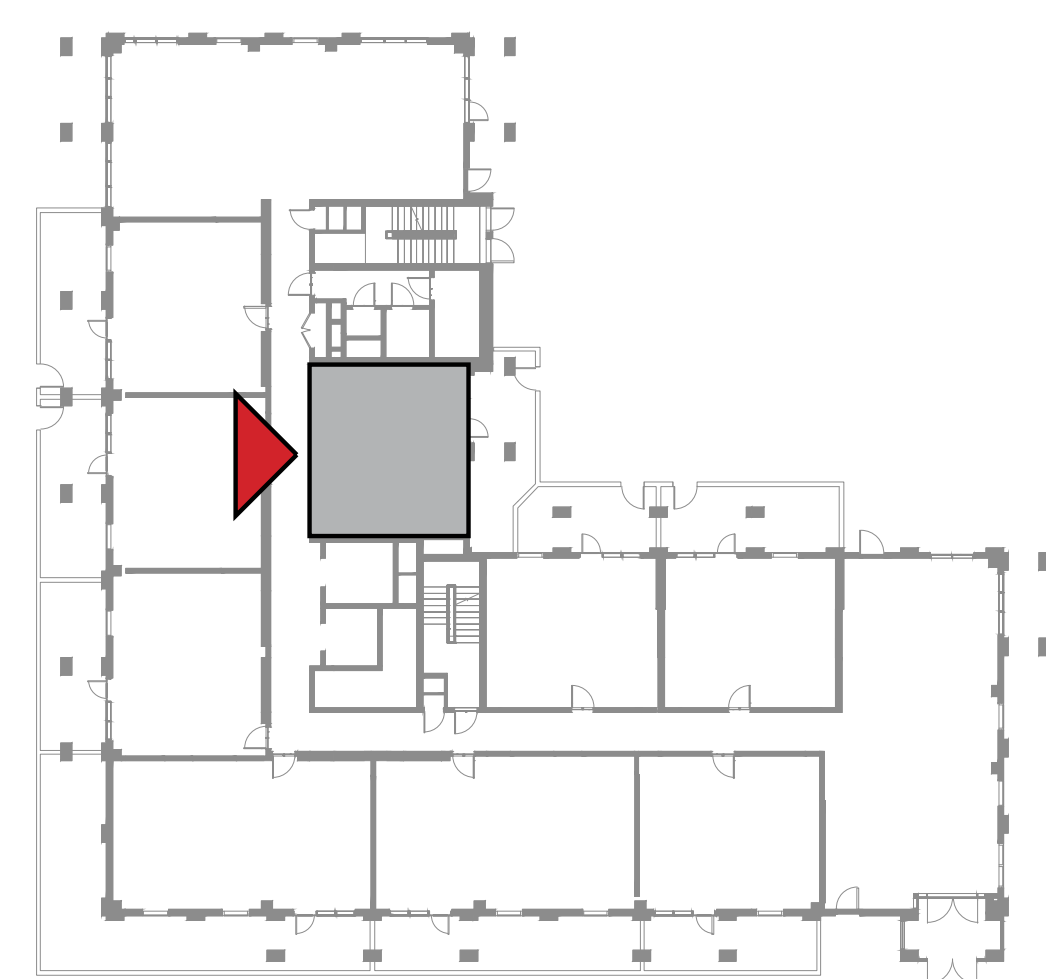
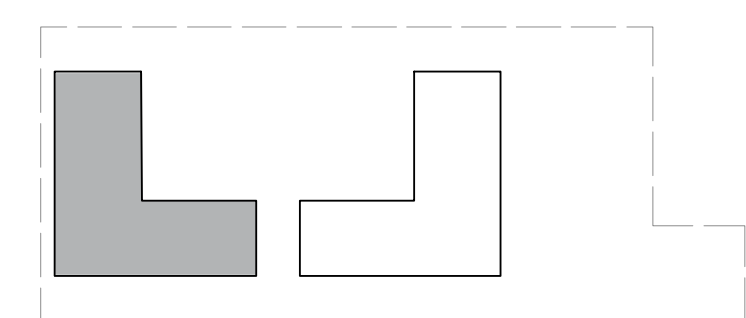
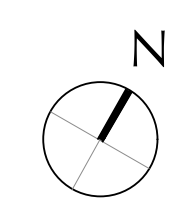
BUILDING 1

LEVEL 1

UNIT 109

1 BEDROOM

APARTMENT AREA	55.30 SQ.M.	595.24 SQ.FT.
BALCONY AREA	25.92 SQ.M.	279.00 SQ.FT.
TOTAL AREA	81.22 SQ.M.	874.24 SQ.FT.



FLOOR PLAN 1. All dimensions are in imperial and metric, and measured from finish to finish excluding construction tolerances. 2. All materials, dimensions, and drawings are approximate only. 3. Information is subject to change without notice, at developer's absolute discretion. 4. Actual area may vary from the stated area. 5. Drawings not to scale. 6. All images used are for illustrative purposes only and do not represent the actual size, features, specifications, fittings, and furnishings. 7. The developer reserves the right to make revisions / alterations, at it's absolute discretion, without any liability whatsoever.