

DUBAI CREEK

HARBOUR

CREEK GATE



www.famproperties.com

2 BEDROOM WITH BALCONY

TOWER 1
UNIT 2 | LEVELS 3-17, 19-30

Suite Area 1018 Sq.ft. / 94.58 Sq.m.

Balcony Area 93 Sq.ft. / 8.60 Sq.m.

Total Area 1111 Sq.ft. / 103.18 Sq.m.



1. All dimensions are in Imperial and metric, and measured to structural elements and exclude wall finishes and construction tolerances. 2. All materials, dimensions, and drawings are approximate only. 3. Information is subject to change without notice, at developer's absolute discretion. 4. Actual area may vary from the stated area. 5. Drawings not to scale. 6. All Images used are for illustrative purposes only and do not represent the actual size, features, specifications, fittings, and furnishings. 7. The developer reserves the right to make revisions/ alterations, at its absolute discretion, without any liability whatsoever. *Please note that landscaping and swimming pool are not provided by the developer.

DUBAI CREEK

HARBOUR

CREEK GATE



www.famproperties.com

3 BEDROOM WITH BALCONY

TOWER 1
UNIT 3 | LEVELS 3-17, 19-30

Suite Area 1403 Sq.ft. / 130.31 Sq.m.

Balcony Area 87 Sq.ft. / 8.11 Sq.m.

Total Area 1490 Sq.ft. / 138.42 Sq.m.



1. All dimensions are in Imperial and metric, and measured to structural elements and exclude wall finishes and construction tolerances. 2. All materials, dimensions, and drawings are approximate only. 3. Information is subject to change without notice, at developer's absolute discretion. 4. Actual area may vary from the stated area. 5. Drawings not to scale. 6. All images used are for illustrative purposes only and do not represent the actual size, features, specifications, fittings, and furnishings. 7. The developer reserves the right to make revisions/ alterations, at its absolute discretion, without any liability whatsoever. *Please note that landscaping and swimming pool are not provided by the developer.

DUBAI CREEK

HARBOUR

CREEK GATE



www.famproperties.com

2 BEDROOM WITH BALCONY

TOWER 1
UNIT 4 | LEVELS 3-17, 19-30

Suite Area 963 Sq.ft. / 89.47 Sq.m.

Balcony Area 83 Sq.ft. / 7.68 Sq.m.

Total Area 1046 Sq.ft. / 97.15 Sq.m.



1. All dimensions are in Imperial and metric, and measured to structural elements and exclude wall finishes and construction tolerances. 2. All materials, dimensions, and drawings are approximate only. 3. Information is subject to change without notice, at developer's absolute discretion. 4. Actual area may vary from the stated area. 5. Drawings not to scale. 6. All images used are for illustrative purposes only and do not represent the actual size, features, specifications, fittings, and furnishings. 7. The developer reserves the right to make revisions/ alterations, at its absolute discretion, without any liability whatsoever. *Please note that landscaping and swimming pool are not provided by the developer.

DUBAI CREEK

HARBOUR

CREEK GATE



www.famproperties.com

2 BEDROOM WITH BALCONY

TOWER 1
UNIT 5 | LEVELS 3-17, 19-30

Suite Area 963 Sq.ft. / 89.47 Sq.m.

Balcony Area 83 Sq.ft. / 7.68 Sq.m.

Total Area 1046 Sq.ft. / 97.15 Sq.m.



1. All dimensions are in Imperial and metric, and measured to structural elements and exclude wall finishes and construction tolerances. 2. All materials, dimensions, and drawings are approximate only. 3. Information is subject to change without notice, at developer's absolute discretion. 4. Actual area may vary from the stated area. 5. Drawings not to scale. 6. All images used are for illustrative purposes only and do not represent the actual size, features, specifications, fittings, and furnishings. 7. The developer reserves the right to make revisions/ alterations, at its absolute discretion, without any liability whatsoever. *Please note that landscaping and swimming pool are not provided by the developer.

DUBAI CREEK

HARBOUR

CREEK GATE



www.famproperties.com

3 BEDROOM WITH BALCONY

TOWER 1
UNIT 6 | LEVELS 3-17, 19-30

Suite Area 1403 Sq.ft. / 130.31 Sq.m.

Balcony Area 87 Sq.ft. / 8.11 Sq.m.

Total Area 1490 Sq.ft. / 138.42 Sq.m.

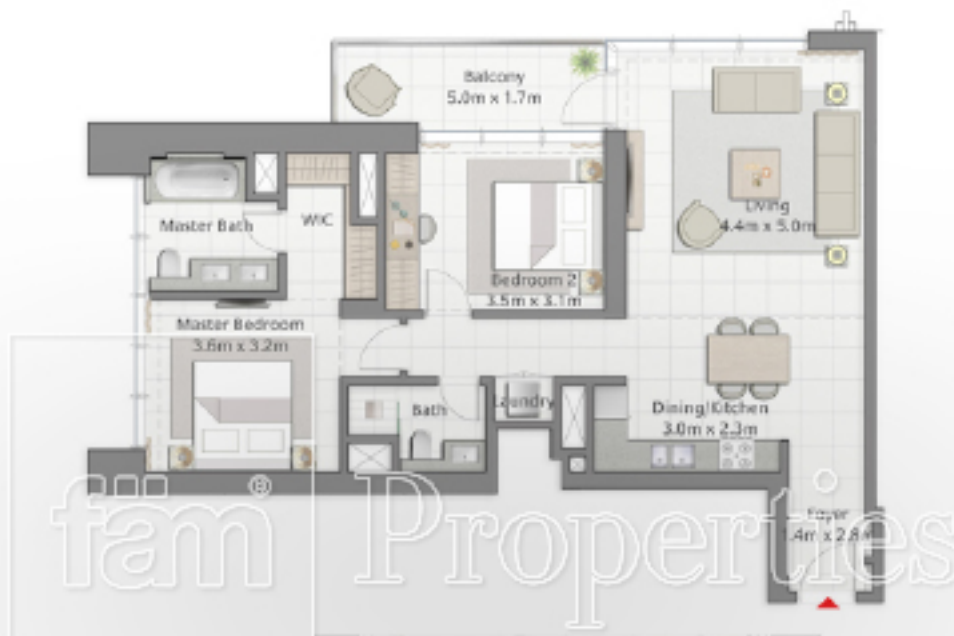


1. All dimensions are in Imperial and metric, and measured to structural elements and exclude wall finishes and construction tolerances. 2. All materials, dimensions, and drawings are approximate only. 3. Information is subject to change without notice, at developer's absolute discretion. 4. Actual area may vary from the stated area. 5. Drawings not to scale. 6. All images used are for illustrative purposes only and do not represent the actual size, features, specifications, fittings, and furnishings. 7. The developer reserves the right to make revisions/ alterations, at its absolute discretion, without any liability whatsoever. *Please note that landscaping and swimming pool are not provided by the developer.

DUBAI CREEK

HARBOUR

CREEK GATE



www.famproperties.com

2 BEDROOM WITH BALCONY

TOWER 1
UNIT 7 | LEVELS 3-17, 19-30

Suite Area 1018 Sq.ft. / 94.58 Sq.m.

Balcony Area 93 Sq.ft. / 8.60 Sq.m.

Total Area 1111 Sq.ft. / 103.18 Sq.m.



1. All dimensions are in Imperial and metric, and measured to structural elements and exclude wall finishes and construction tolerances. 2. All materials, dimensions, and drawings are approximate only. 3. Information is subject to change without notice, at developer's absolute discretion. 4. Actual area may vary from the stated area. 5. Drawings not to scale. 6. All images used are for illustrative purposes only and do not represent the actual size, features, specifications, fittings, and furnishings. 7. The developer reserves the right to make revisions/ alterations, at its absolute discretion, without any liability whatsoever. *Please note that landscaping and swimming pool are not provided by the developer.

DUBAI CREEK

HARBOUR

CREEK GATE



1 BEDROOM WITH BALCONY

TOWER 1
UNIT 8 | LEVELS 3-17, 19-30

Suite Area 645 Sq.ft. / 59.90 Sq.m.

Balcony Area 80 Sq.ft. / 7.42 Sq.m.

Total Area 725 Sq.ft. / 67.32 Sq.m.



1. All dimensions are in Imperial and metric, and measured to structural elements and exclude wall finishes and construction tolerances. 2. All materials, dimensions, and drawings are approximate only. 3. Information is subject to change without notice, at developer's absolute discretion. 4. Actual area may vary from the stated area. 5. Drawings not to scale. 6. All images used are for illustrative purposes only and do not represent the actual size, features, specifications, fittings, and furnishings. 7. The developer reserves the right to make revisions/alterations, at its absolute discretion, without any liability whatsoever. *Please note that landscaping and swimming pool are not provided by the developer.

DUBAI CREEK

HARBOUR

CREEK GATE



1 BEDROOM WITH BALCONY

TOWER 1
UNIT 1 | LEVELS 3-17, 19-30

Suite Area 645 Sq.ft. / 59.90 Sq.m.

Balcony Area 80 Sq.ft. / 7.42 Sq.m.

Total Area 725 Sq.ft. / 67.32 Sq.m.



1. All dimensions are in Imperial and metric, and measured to structural elements and exclude wall finishes and construction tolerances. 2. All materials, dimensions, and drawings are approximate only. 3. Information is subject to change without notice, at developer's absolute discretion. 4. Actual area may vary from the stated area. 5. Drawings not to scale. 6. All images used are for illustrative purposes only and do not represent the actual size, features, specifications, fittings, and furnishings. 7. The developer reserves the right to make revisions/ alterations, at its absolute discretion, without any liability whatsoever. *Please note that landscaping and swimming pool are not provided by the developer.