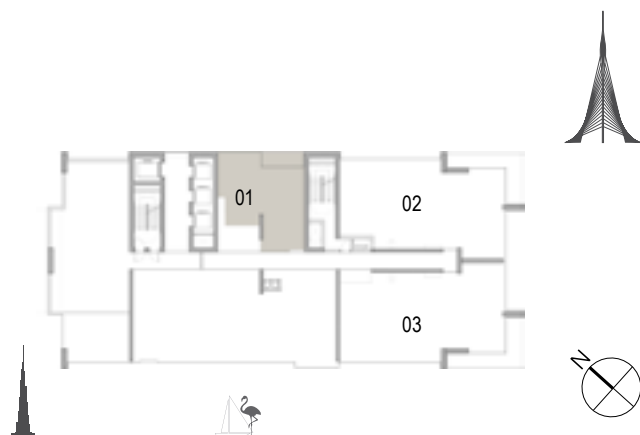


FLOOR PLANS

BUILDING 1

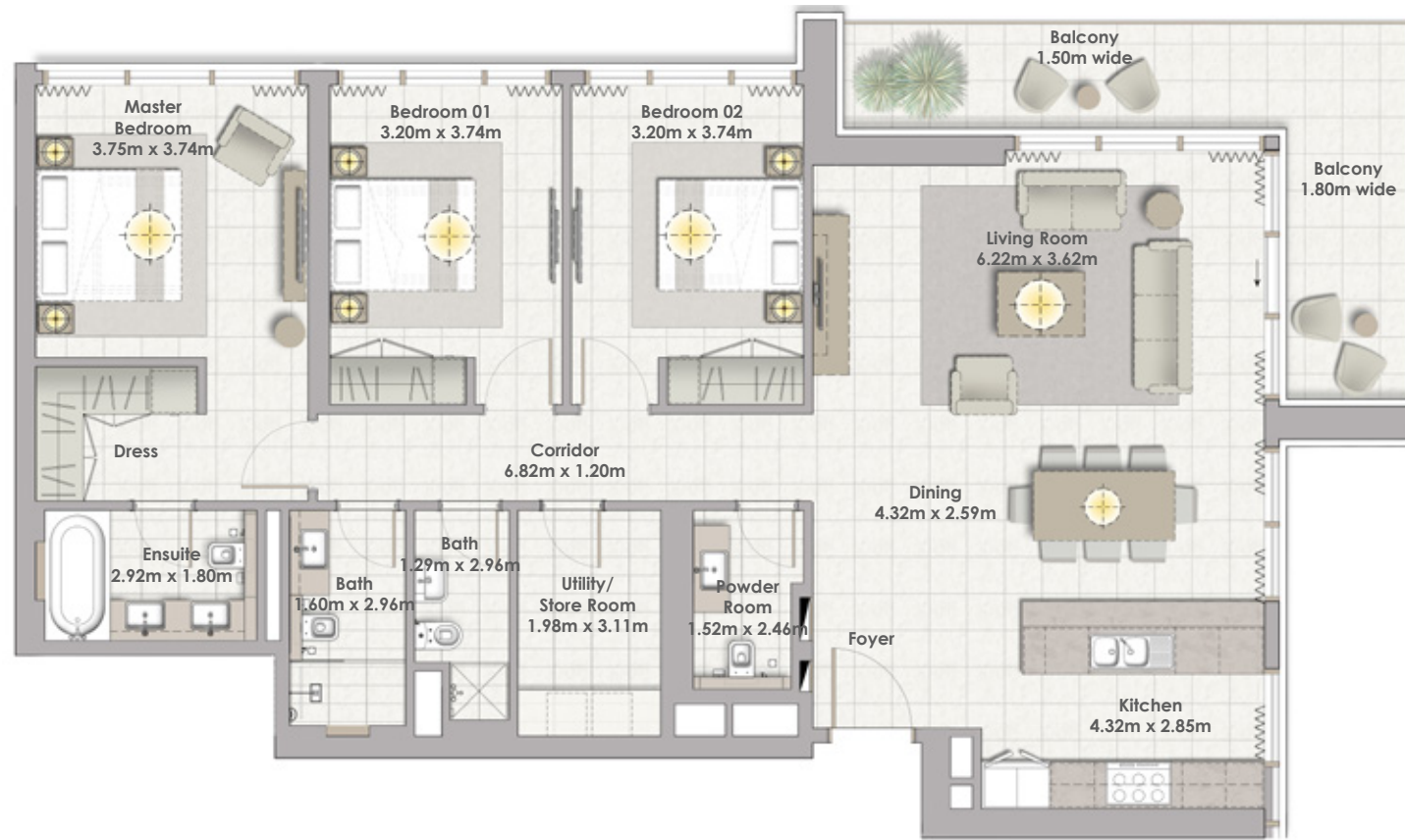
Building 01
1 BEDROOM
UNIT 01 / LEVEL GF



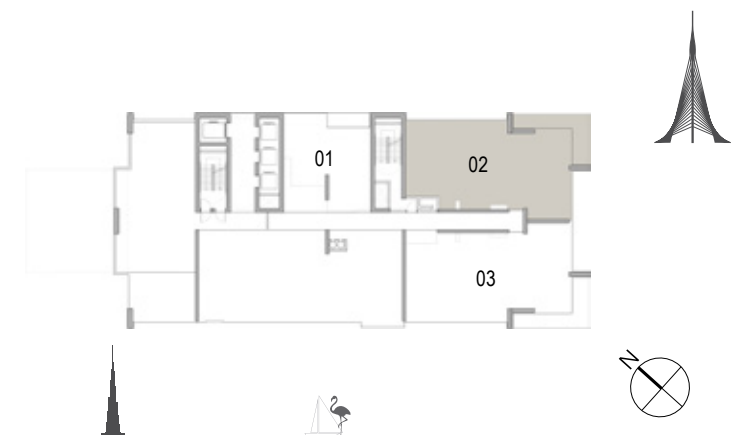
| | |
|--------------|---------------------------|
| Suite Area | 69.63 Sqm. / 749.49 Sqft. |
| Balcony Area | 8.01 Sqm. / 86.22 Sqft. |
| Total Area | 77.64 Sqm. / 835.71 Sqft. |

FLOOR PLAN 1. All dimensions are in imperial and metric, and measured from finish to finish excluding construction tolerances. 2. All materials, dimensions, and drawings are approximate only. 3. Information is subject to change without notice, at developer's absolute discretion. 4. Actual area may vary from the stated area. 5. Drawings not to scale. 6. All images used are for illustrative purposes only and do not represent the actual size, features, specifications, fittings, and furnishings. 7. The developer reserves the right to make revisions / alterations, at its absolute discretion, without any liability whatsoever.

Building 01
3 BEDROOM
UNIT 02 / LEVEL GF



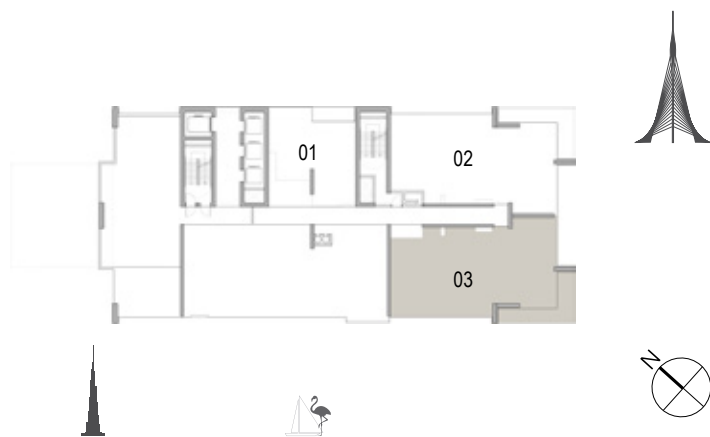
| | |
|--------------|-----------------------------|
| Suite Area | 150.21 Sqm. / 1616.85 Sqft. |
| Balcony Area | 21.31 Sqm. / 229.38 Sqft. |
| Total Area | 171.52 Sqm. / 1846.23 Sqft. |



FLOOR PLAN 1. All dimensions are in imperial and metric, and measured from finish to finish excluding construction tolerances. 2. All materials, dimensions, and drawings are approximate only. 3. Information is subject to change without notice, at developer's absolute discretion. 4. Actual area may vary from the stated area. 5. Drawings not to scale. 6. All images used are for illustrative purposes only and do not represent the actual size, features, specifications, fittings, and furnishings. 7. The developer reserves the right to make revisions / alterations, at its absolute discretion, without any liability whatsoever.



Building 01
3 BEDROOM
UNIT 03 / LEVEL GF



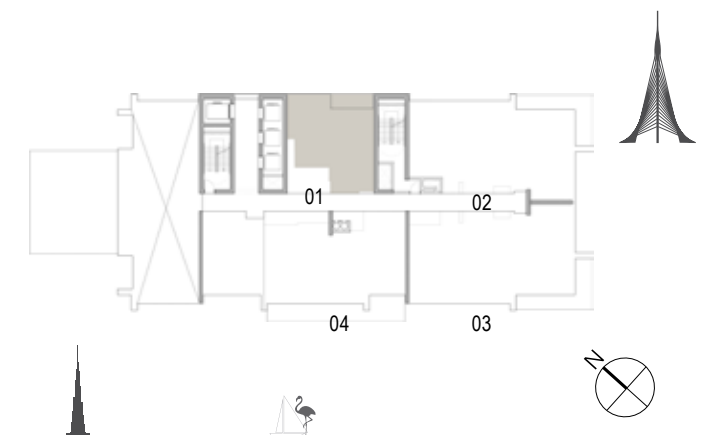
| | |
|--------------|-----------------------------|
| Suite Area | 149.80 Sqm. / 1612.43 Sqft. |
| Balcony Area | 21.33 Sqm. / 229.59 Sqft. |
| Total Area | 171.13 Sqm. / 1842.03 Sqft. |

FLOOR PLAN 1. All dimensions are in imperial and metric, and measured from finish to finish excluding construction tolerances. 2. All materials, dimensions, and drawings are approximate only. 3. Information is subject to change without notice, at developer's absolute discretion. 4. Actual area may vary from the stated area. 5. Drawings not to scale. 6. All images used are for illustrative purposes only and do not represent the actual size, features, specifications, fittings, and furnishings. 7. The developer reserves the right to make revisions / alterations, at its absolute discretion, without any liability whatsoever.

Building 01
1 BEDROOM
UNIT 01 / LEVEL 01



| | |
|--------------|---------------------------|
| Suite Area | 69.73 Sqm. / 750.57 Sqft. |
| Balcony Area | 8.01 Sqm. / 86.22 Sqft. |
| Total Area | 77.74 Sqm. / 836.79 Sqft. |





Building 01
3 BEDROOM
UNIT 02 / LEVEL 01



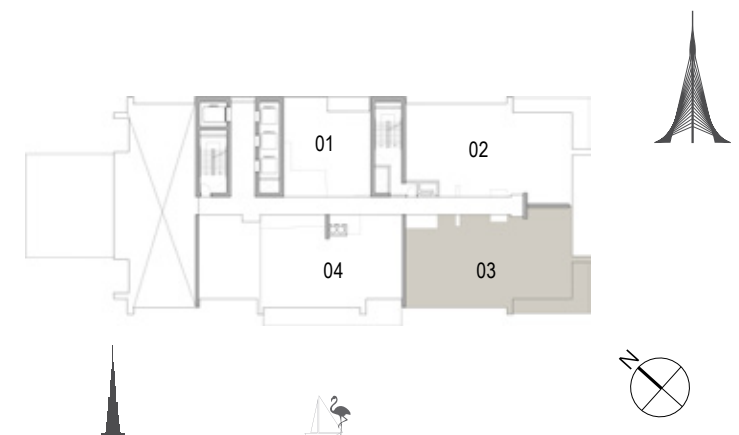
| | |
|-------------------|------------------------------------|
| Suite Area | 150.33 Sqm. / 1618.14 Sqft. |
| Balcony Area | 21.31 Sqm. / 229.38 Sqft. |
| Total Area | 171.64 Sqm. / 1847.52 Sqft. |

FLOOR PLAN 1. All dimensions are in imperial and metric, and measured from finish to finish excluding construction tolerances. 2. All materials, dimensions, and drawings are approximate only. 3. Information is subject to change without notice, at developer's absolute discretion. 4. Actual area may vary from the stated area. 5. Drawings not to scale. 6. All images used are for illustrative purposes only and do not represent the actual size, features, specifications, fittings, and furnishings. 7. The developer reserves the right to make revisions / alterations, at its absolute discretion, without any liability whatsoever.

Building 01
3 BEDROOM
UNIT 03 / LEVEL 01



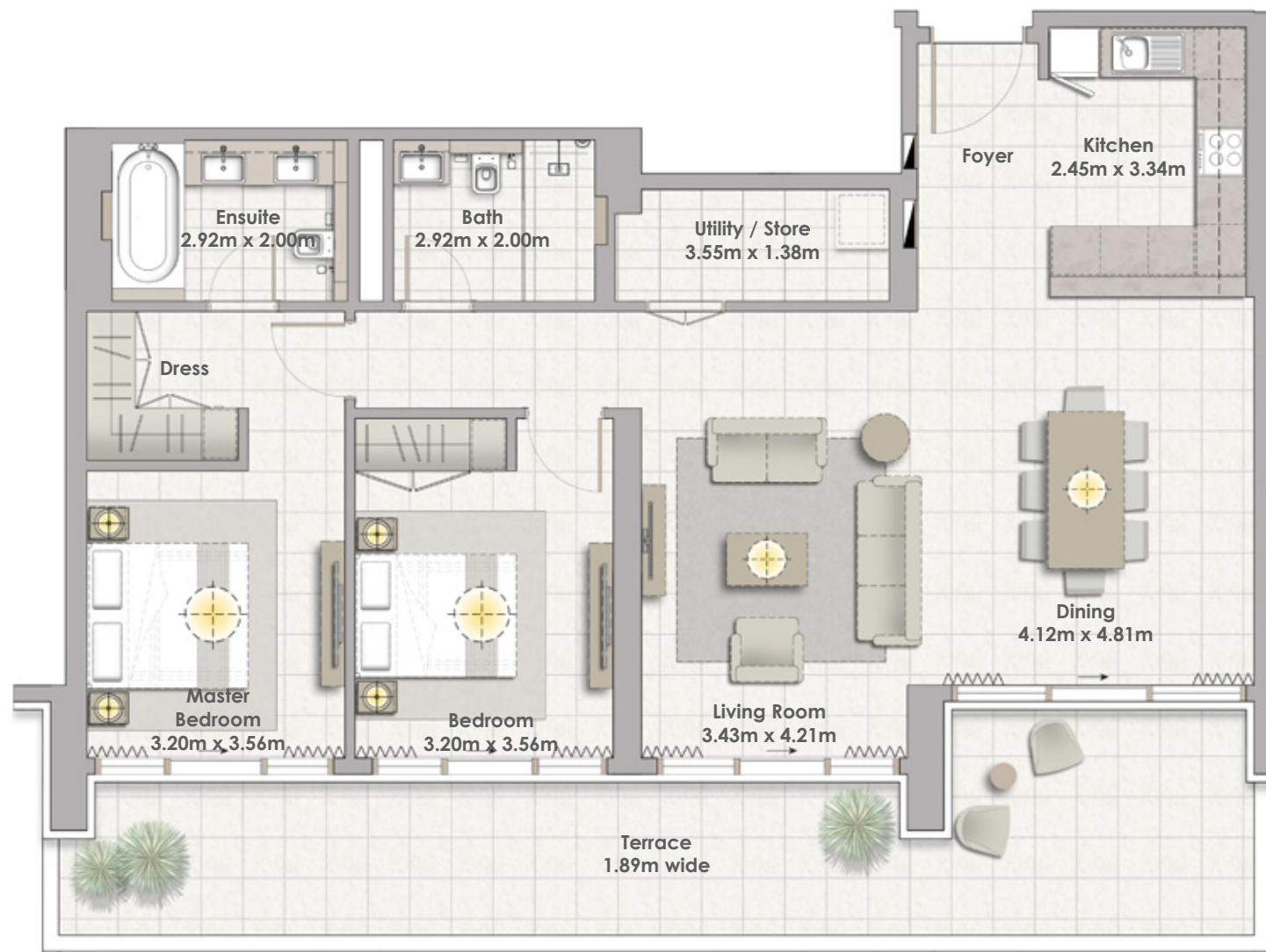
| | |
|--------------|-----------------------------|
| Suite Area | 149.80 Sqm. / 1612.43 Sqft. |
| Balcony Area | 21.33 Sqm. / 229.59 Sqft. |
| Total Area | 171.13 Sqm. / 1842.03 Sqft. |



FLOOR PLAN 1. All dimensions are in imperial and metric, and measured from finish to finish excluding construction tolerances. 2. All materials, dimensions, and drawings are approximate only. 3. Information is subject to change without notice, at developer's absolute discretion. 4. Actual area may vary from the stated area. 5. Drawings not to scale. 6. All images used are for illustrative purposes only and do not represent the actual size, features, specifications, fittings, and furnishings. 7. The developer reserves the right to make revisions / alterations, at its absolute discretion, without any liability whatsoever.

THE COVE

DUBAI CREEK HARBOUR



Building 01
2 BEDROOM
UNIT 04 / LEVEL 01

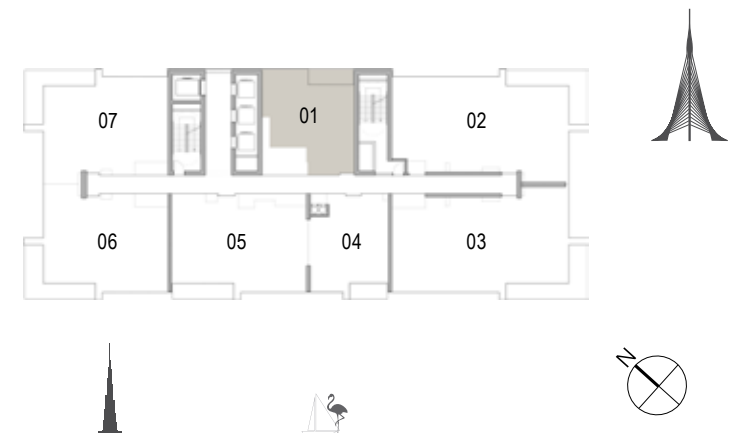


| | |
|-------------------|------------------------------------|
| Suite Area | 116.37 Sqm. / 1252.60 Sqft. |
| Terrace Area | 36.67 Sqm. / 394.71 Sqft. |
| Total Area | 153.04 Sqm. / 1647.31 Sqft. |

FLOOR PLAN 1. All dimensions are in imperial and metric, and measured from finish to finish excluding construction tolerances. 2. All materials, dimensions, and drawings are approximate only. 3. Information is subject to change without notice, at developer's absolute discretion. 4. Actual area may vary from the stated area. 5. Drawings not to scale. 6. All images used are for illustrative purposes only and do not represent the actual size, features, specifications, fittings, and furnishings. 7. The developer reserves the right to make revisions / alterations, at its absolute discretion, without any liability whatsoever.



Building 01
1 BEDROOM
UNIT 01 / LEVELS 02-09, 11-19



| | |
|--------------|---------------------------|
| Suite Area | 69.75 Sqm. / 750.78 Sqft. |
| Balcony Area | 8.01 Sqm. / 86.22 Sqft. |
| Total Area | 77.76 Sqm. / 837.00 Sqft. |

FLOOR PLAN 1. All dimensions are in imperial and metric, and measured from finish to finish excluding construction tolerances. 2. All materials, dimensions, and drawings are approximate only. 3. Information is subject to change without notice, at developer's absolute discretion. 4. Actual area may vary from the stated area. 5. Drawings not to scale. 6. All images used are for illustrative purposes only and do not represent the actual size, features, specifications, fittings, and furnishings. 7. The developer reserves the right to make revisions / alterations, at its absolute discretion, without any liability whatsoever.



Building 01
3 BEDROOM
UNIT 02 / LEVELS 02-09, 11-19



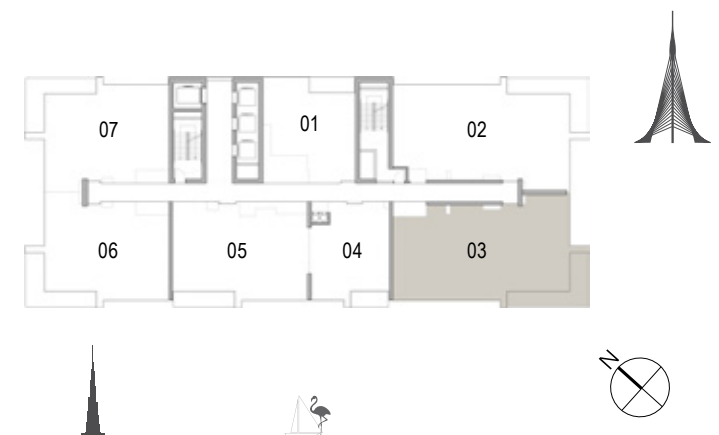
| | |
|-------------------|------------------------------------|
| Suite Area | 150.28 Sqm. / 1617.60 Sqft. |
| Balcony Area | 21.31 Sqm. / 229.38 Sqft. |
| Total Area | 171.59 Sqm. / 1846.98 Sqft. |

FLOOR PLAN 1. All dimensions are in imperial and metric, and measured from finish to finish excluding construction tolerances. 2. All materials, dimensions, and drawings are approximate only. 3. Information is subject to change without notice, at developer's absolute discretion. 4. Actual area may vary from the stated area. 5. Drawings not to scale. 6. All images used are for illustrative purposes only and do not represent the actual size, features, specifications, fittings, and furnishings. 7. The developer reserves the right to make revisions / alterations, at its absolute discretion, without any liability whatsoever.

Building 01
3 BEDROOM
UNIT 03 / LEVELS 02-09, 11-19

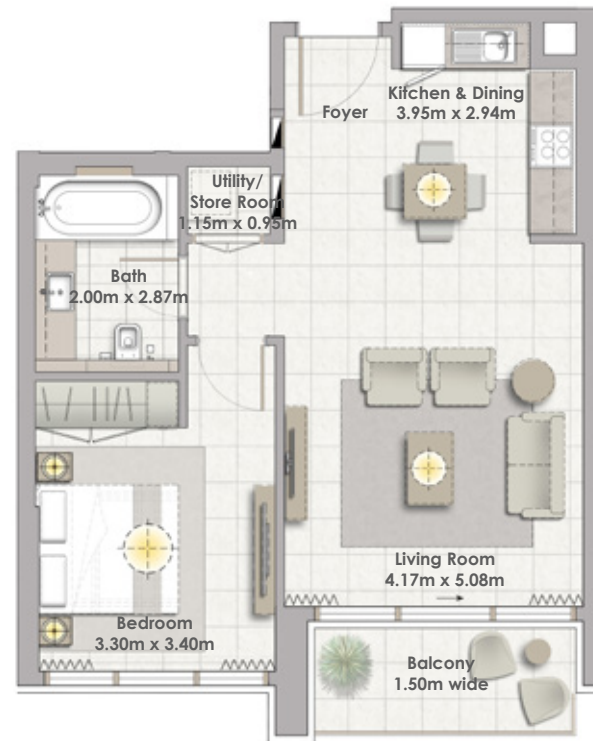


| | |
|--------------|-----------------------------|
| Suite Area | 149.83 Sqm. / 1612.76 Sqft. |
| Balcony Area | 21.31 Sqm. / 229.38 Sqft. |
| Total Area | 171.14 Sqm. / 1842.14 Sqft. |



FLOOR PLAN 1. All dimensions are in imperial and metric, and measured from finish to finish excluding construction tolerances. 2. All materials, dimensions, and drawings are approximate only. 3. Information is subject to change without notice, at developer's absolute discretion. 4. Actual area may vary from the stated area. 5. Drawings not to scale. 6. All images used are for illustrative purposes only and do not represent the actual size, features, specifications, fittings, and furnishings. 7. The developer reserves the right to make revisions / alterations, at its absolute discretion, without any liability whatsoever.

Building 01
1 BEDROOM
UNIT 04 / LEVELS 02-09, 11-19



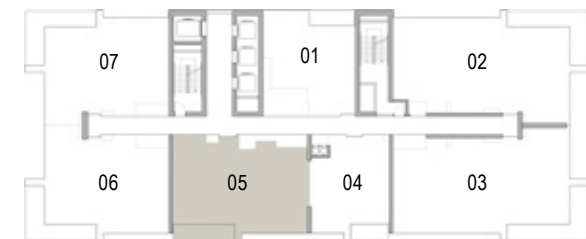
| | |
|--------------|---------------------------|
| Suite Area | 61.53 Sqm. / 662.30 Sqft. |
| Balcony Area | 6.78 Sqm. / 72.98 Sqft. |
| Total Area | 68.31 Sqm. / 735.28 Sqft. |

FLOOR PLAN 1. All dimensions are in imperial and metric, and measured from finish to finish excluding construction tolerances. 2. All materials, dimensions, and drawings are approximate only. 3. Information is subject to change without notice, at developer's absolute discretion. 4. Actual area may vary from the stated area. 5. Drawings not to scale. 6. All images used are for illustrative purposes only and do not represent the actual size, features, specifications, fittings, and furnishings. 7. The developer reserves the right to make revisions / alterations, at its absolute discretion, without any liability whatsoever.

Building 01
2 BEDROOM
UNIT 05 / LEVELS 02-09, 11-19



| | |
|--------------|-----------------------------|
| Suite Area | 109.15 Sqm. / 1174.88 Sqft. |
| Balcony Area | 10.65 Sqm. / 114.64 Sqft. |
| Total Area | 119.80 Sqm. / 1289.52 Sqft. |



FLOOR PLAN 1. All dimensions are in imperial and metric, and measured from finish to finish excluding construction tolerances. 2. All materials, dimensions, and drawings are approximate only. 3. Information is subject to change without notice, at developer's absolute discretion. 4. Actual area may vary from the stated area. 5. Drawings not to scale. 6. All images used are for illustrative purposes only and do not represent the actual size, features, specifications, fittings, and furnishings. 7. The developer reserves the right to make revisions / alterations, at its absolute discretion, without any liability whatsoever.





Building 01
2 BEDROOM
UNIT 06 / LEVELS 02-09, 11-19



| | |
|--------------|-----------------------------|
| Suite Area | 105.01 Sqm. / 1130.32 Sqft. |
| Balcony Area | 19.52 Sqm. / 210.11 Sqft. |
| Total Area | 124.53 Sqm. / 1340.43 Sqft. |

FLOOR PLAN 1. All dimensions are in imperial and metric, and measured from finish to finish excluding construction tolerances. 2. All materials, dimensions, and drawings are approximate only. 3. Information is subject to change without notice, at developer's absolute discretion. 4. Actual area may vary from the stated area. 5. Drawings not to scale. 6. All images used are for illustrative purposes only and do not represent the actual size, features, specifications, fittings, and furnishings. 7. The developer reserves the right to make revisions / alterations, at its absolute discretion, without any liability whatsoever.

Building 01
2 BEDROOM
UNIT 07 / LEVELS 02-09, 11-19



| | |
|--------------|-----------------------------|
| Suite Area | 105.40 Sqm. / 1134.52 Sqft. |
| Balcony Area | 19.65 Sqm. / 211.51 Sqft. |
| Total Area | 125.05 Sqm. / 1346.03 Sqft. |

FLOOR PLAN 1. All dimensions are in imperial and metric, and measured from finish to finish excluding construction tolerances. 2. All materials, dimensions, and drawings are approximate only. 3. Information is subject to change without notice, at developer's absolute discretion. 4. Actual area may vary from the stated area. 5. Drawings not to scale. 6. All images used are for illustrative purposes only and do not represent the actual size, features, specifications, fittings, and furnishings. 7. The developer reserves the right to make revisions / alterations, at its absolute discretion, without any liability whatsoever.



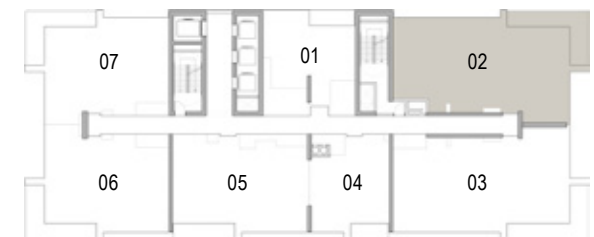
Building 01
1 BEDROOM
UNIT 01 / LEVEL 10



| | |
|--------------|---------------------------|
| Suite Area | 58.95 Sqm. / 634.53 Sqft. |
| Balcony Area | 8.01 Sqm. / 86.22 Sqft. |
| Total Area | 66.96 Sqm. / 720.75 Sqft. |

FLOOR PLAN 1. All dimensions are in imperial and metric, and measured from finish to finish excluding construction tolerances. 2. All materials, dimensions, and drawings are approximate only. 3. Information is subject to change without notice, at developer's absolute discretion. 4. Actual area may vary from the stated area. 5. Drawings not to scale. 6. All images used are for illustrative purposes only and do not represent the actual size, features, specifications, fittings, and furnishings. 7. The developer reserves the right to make revisions / alterations, at its absolute discretion, without any liability whatsoever.

Building 01
3 BEDROOM
UNIT 02 / LEVEL 10



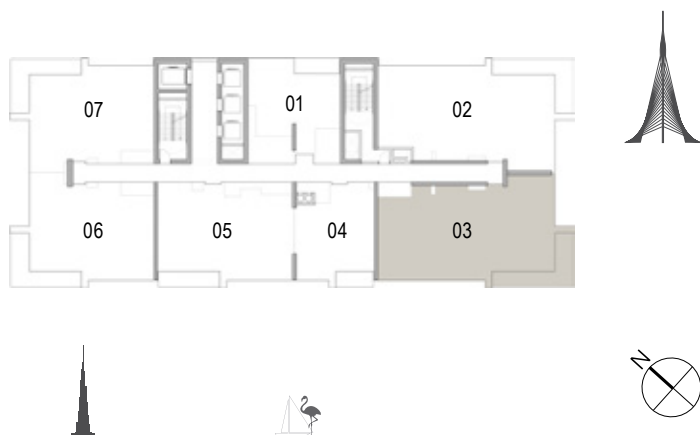
| | |
|--------------|-----------------------------|
| Suite Area | 150.28 Sqm. / 1617.60 Sqft. |
| Balcony Area | 21.31 Sqm. / 229.38 Sqft. |
| Total Area | 171.59 Sqm. / 1846.98 Sqft. |



FLOOR PLAN 1. All dimensions are in imperial and metric, and measured from finish to finish excluding construction tolerances. 2. All materials, dimensions, and drawings are approximate only. 3. Information is subject to change without notice, at developer's absolute discretion. 4. Actual area may vary from the stated area. 5. Drawings not to scale. 6. All images used are for illustrative purposes only and do not represent the actual size, features, specifications, fittings, and furnishings. 7. The developer reserves the right to make revisions / alterations, at its absolute discretion, without any liability whatsoever.



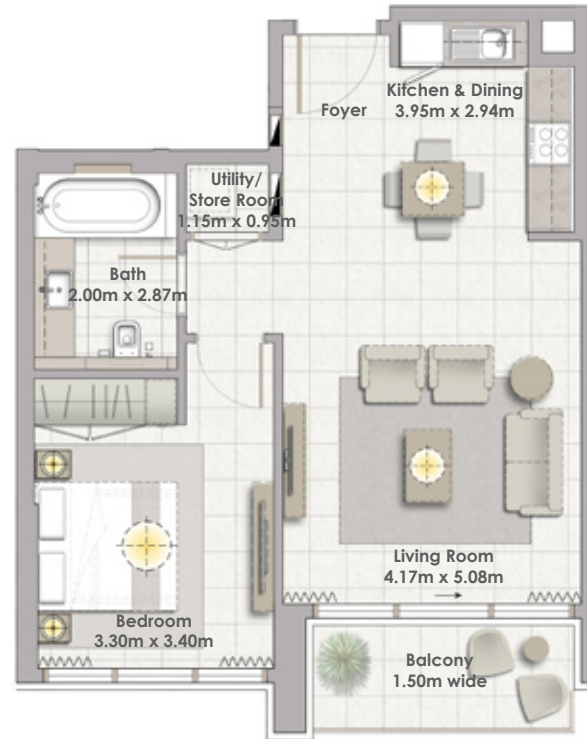
Building 01
3 BEDROOM
UNIT 03 / LEVEL 10



| | |
|--------------|-----------------------------|
| Suite Area | 149.75 Sqm. / 1611.90 Sqft. |
| Balcony Area | 21.33 Sqm. / 229.59 Sqft. |
| Total Area | 171.08 Sqm. / 1841.49 Sqft. |

FLOOR PLAN 1. All dimensions are in imperial and metric, and measured from finish to finish excluding construction tolerances. 2. All materials, dimensions, and drawings are approximate only. 3. Information is subject to change without notice, at developer's absolute discretion. 4. Actual area may vary from the stated area. 5. Drawings not to scale. 6. All images used are for illustrative purposes only and do not represent the actual size, features, specifications, fittings, and furnishings. 7. The developer reserves the right to make revisions / alterations, at its absolute discretion, without any liability whatsoever.

Building 01
1 BEDROOM
UNIT 04 / LEVEL 10



| | |
|--------------|---------------------------|
| Suite Area | 61.53 Sqm. / 662.30 Sqft. |
| Balcony Area | 6.78 Sqm. / 72.98 Sqft. |
| Total Area | 68.31 Sqm. / 735.28 Sqft. |



FLOOR PLAN 1. All dimensions are in imperial and metric, and measured from finish to finish excluding construction tolerances. 2. All materials, dimensions, and drawings are approximate only. 3. Information is subject to change without notice, at developer's absolute discretion. 4. Actual area may vary from the stated area. 5. Drawings not to scale. 6. All images used are for illustrative purposes only and do not represent the actual size, features, specifications, fittings, and furnishings. 7. The developer reserves the right to make revisions / alterations, at its absolute discretion, without any liability whatsoever.



Building 01
2 BEDROOM
UNIT 05 / LEVEL 10



| | |
|--------------|-----------------------------|
| Suite Area | 109.15 Sqm. / 1174.88 Sqft. |
| Balcony Area | 10.65 Sqm. / 114.64 Sqft. |
| Total Area | 119.80 Sqm. / 1289.52 Sqft. |

FLOOR PLAN 1. All dimensions are in imperial and metric, and measured from finish to finish excluding construction tolerances. 2. All materials, dimensions, and drawings are approximate only. 3. Information is subject to change without notice, at developer's absolute discretion. 4. Actual area may vary from the stated area. 5. Drawings not to scale. 6. All images used are for illustrative purposes only and do not represent the actual size, features, specifications, fittings, and furnishings. 7. The developer reserves the right to make revisions / alterations, at its absolute discretion, without any liability whatsoever.

Building 01
2 BEDROOM
UNIT 06 / LEVEL 10



| | |
|--------------|-----------------------------|
| Suite Area | 105.01 Sqm. / 1130.32 Sqft. |
| Balcony Area | 19.52 Sqm. / 210.11 Sqft. |
| Total Area | 124.53 Sqm. / 1340.43 Sqft. |



FLOOR PLAN 1. All dimensions are in imperial and metric, and measured from finish to finish excluding construction tolerances. 2. All materials, dimensions, and drawings are approximate only. 3. Information is subject to change without notice, at developer's absolute discretion. 4. Actual area may vary from the stated area. 5. Drawings not to scale. 6. All images used are for illustrative purposes only and do not represent the actual size, features, specifications, fittings, and furnishings. 7. The developer reserves the right to make revisions / alterations, at its absolute discretion, without any liability whatsoever.



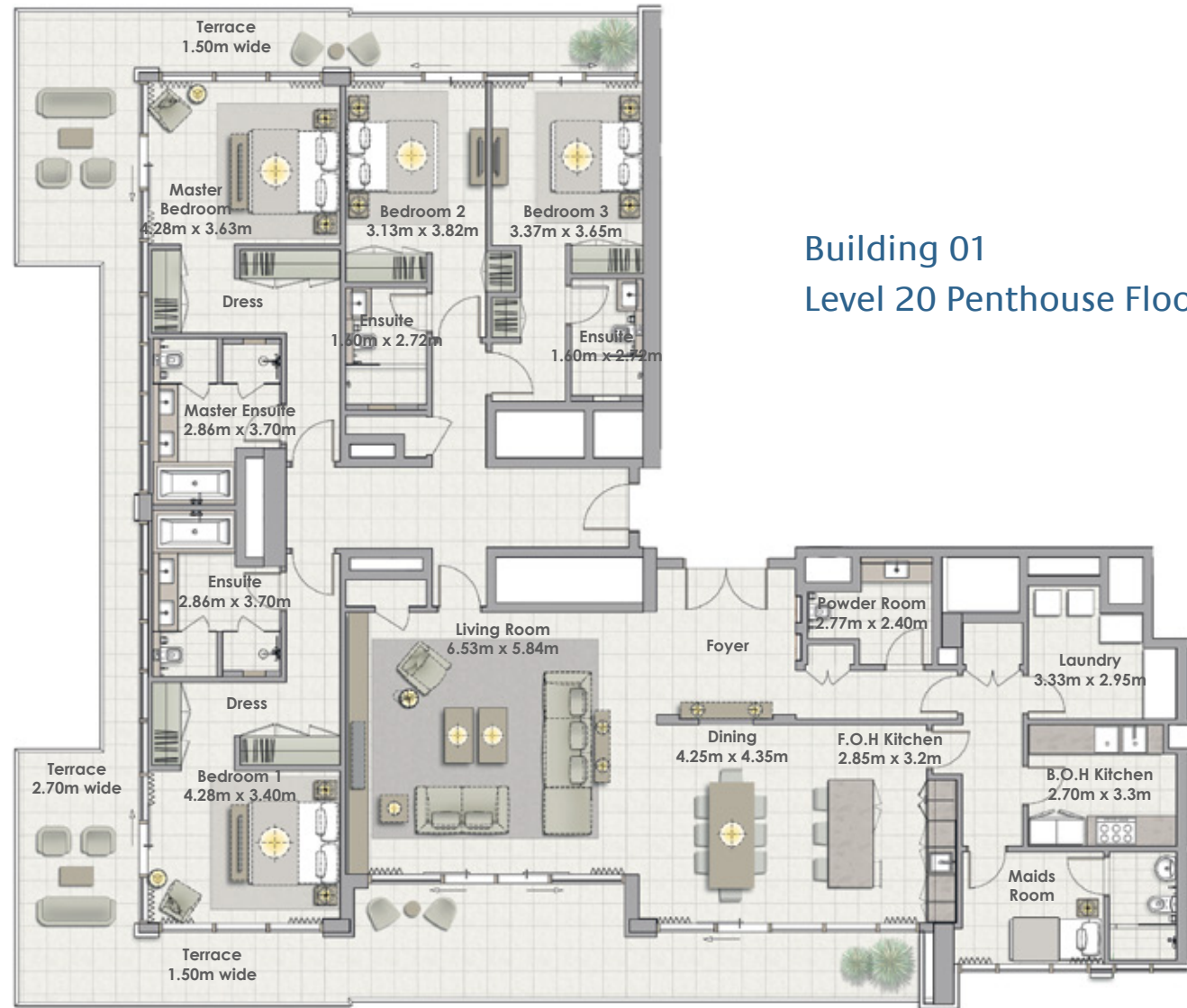


Building 01
2 BEDROOM
UNIT 07 / LEVEL 10



| | |
|-------------------|------------------------------------|
| Suite Area | 105.40 Sqm. / 1134.52 Sqft. |
| Balcony Area | 19.65 Sqm. / 211.51 Sqft. |
| Total Area | 125.05 Sqm. / 1346.03 Sqft. |

FLOOR PLAN 1. All dimensions are in imperial and metric, and measured from finish to finish excluding construction tolerances. 2. All materials, dimensions, and drawings are approximate only. 3. Information is subject to change without notice, at developer's absolute discretion. 4. Actual area may vary from the stated area. 5. Drawings not to scale. 6. All images used are for illustrative purposes only and do not represent the actual size, features, specifications, fittings, and furnishings. 7. The developer reserves the right to make revisions / alterations, at its absolute discretion, without any liability whatsoever.



Building 01
Level 20 Penthouse Floor Plan - Unit 01

Building 01
4 BEDROOM
UNIT 01/ LEVELS 20



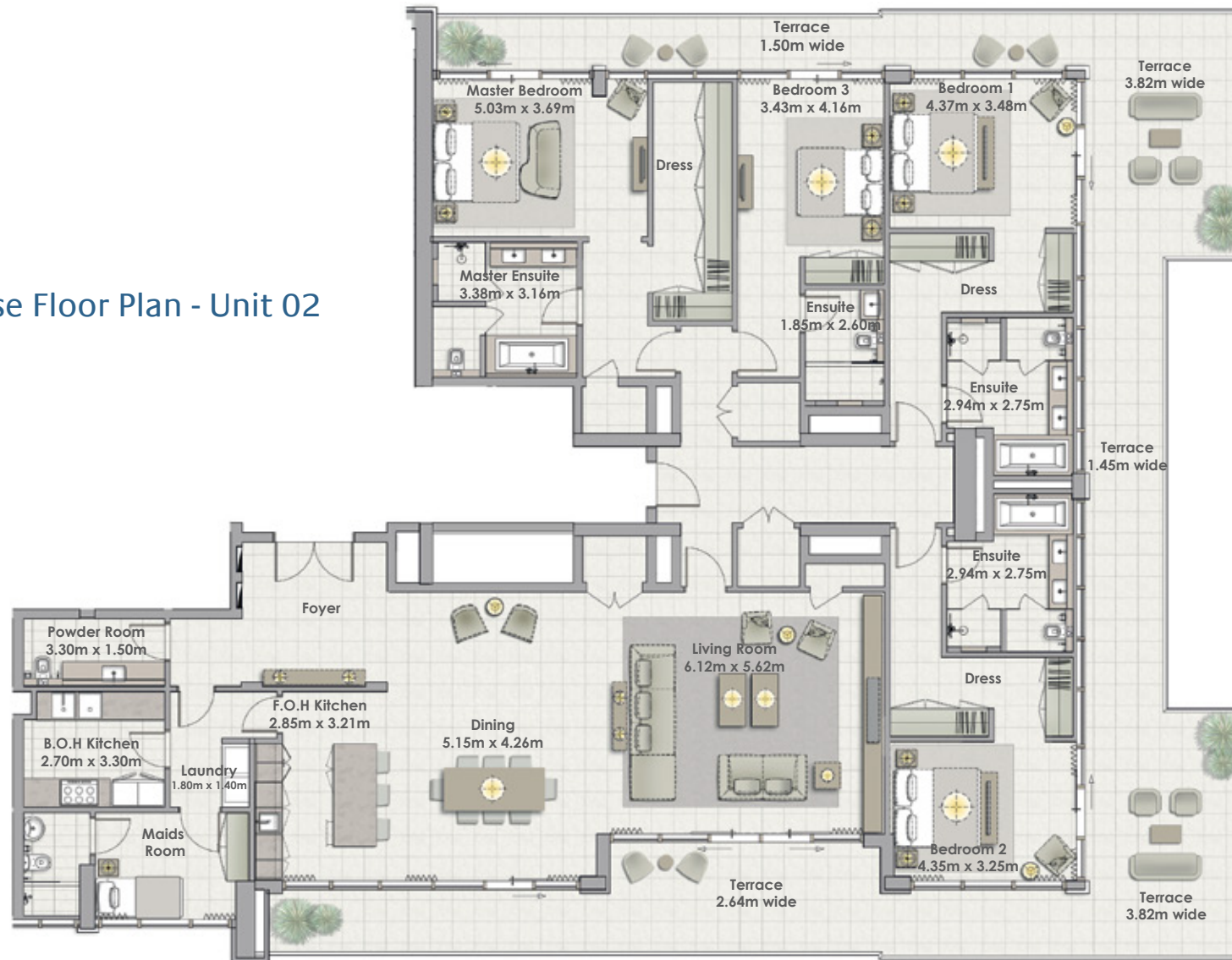
| | |
|--------------|-----------------------------|
| Suite Area | 331.27 Sqm. / 3565.76 Sqft. |
| Balcony Area | 123.31 Sqm. / 1327 Sqft. |
| Total Area | 454.58 Sqm. / 4893.06 Sqft. |

FLOOR PLAN 1. All dimensions are in imperial and metric, and measured from finish to finish excluding construction tolerances. 2. All materials, dimensions, and drawings are approximate only. 3. Information is subject to change without notice, at developer's absolute discretion. 4. Actual area may vary from the stated area. 5. Drawings not to scale. 6. All images used are for illustrative purposes only and do not represent the actual size, features, specifications, fittings, and furnishings. 7. The developer reserves the right to make revisions / alterations, at its absolute discretion, without any liability whatsoever.

THE COVE

DUBAI CREEK HARBOUR

Building 01 Level 20 Penthouse Floor Plan - Unit 02



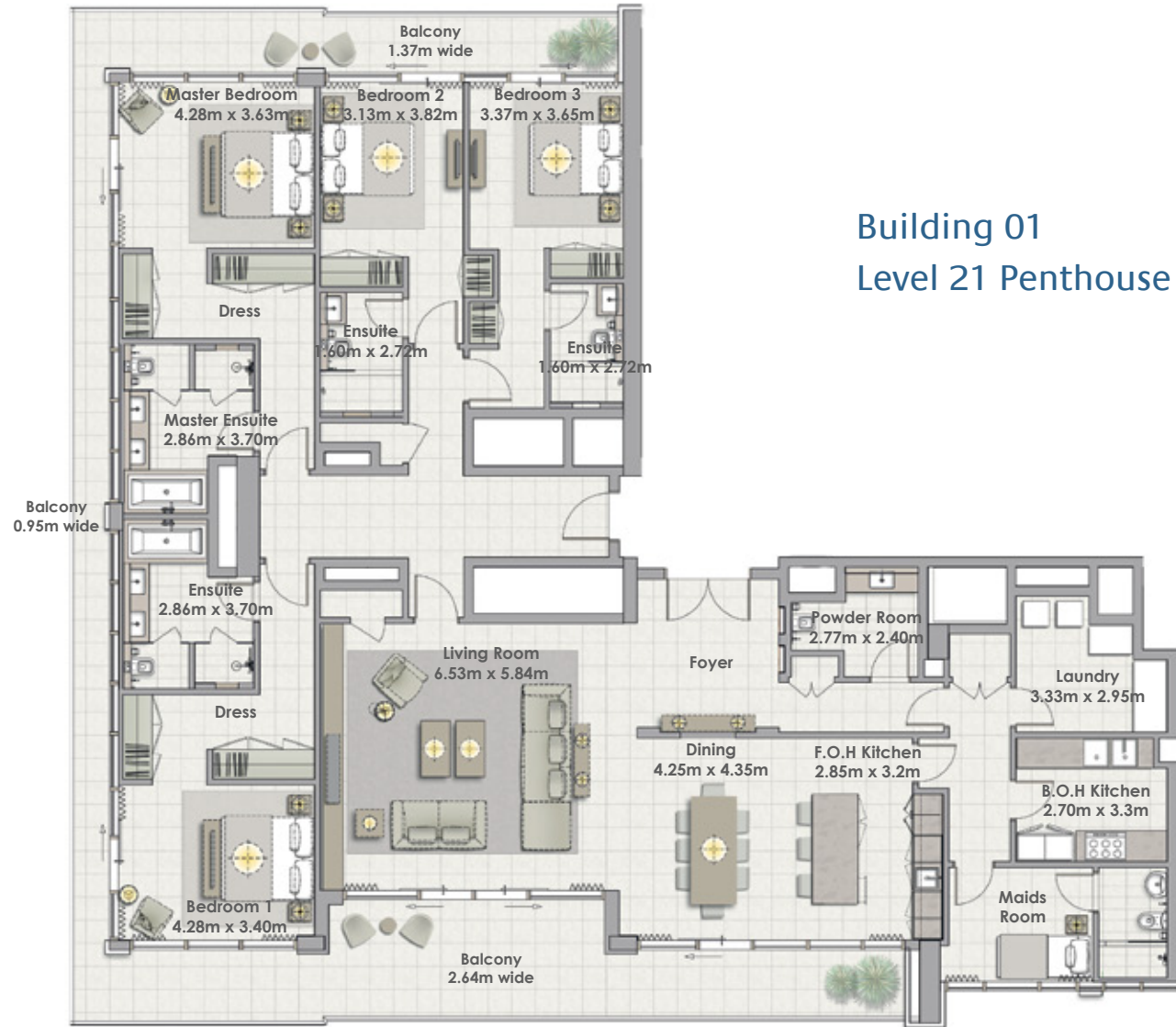
Building 01 4 BEDROOM UNIT 02/ LEVELS 20

| | |
|--------------|-----------------------------|
| Suite Area | 291.70 Sqm. / 3139.83 Sqft. |
| Terrace Area | 91.33 Sqm. / 983.07 Sqft. |
| Total Area | 383.03 Sqm. / 4122.90 Sqft. |



FLOOR PLAN 1. All dimensions are in imperial and metric, and measured from finish to finish excluding construction tolerances. 2. All materials, dimensions, and drawings are approximate only. 3. Information is subject to change without notice, at developer's absolute discretion. 4. Actual area may vary from the stated area. 5. Drawings not to scale. 6. All images used are for illustrative purposes only and do not represent the actual size, features, specifications, fittings, and furnishings. 7. The developer reserves the right to make revisions / alterations, at its absolute discretion, without any liability whatsoever.





Building 01
Level 21 Penthouse Floor Plan - Unit 01

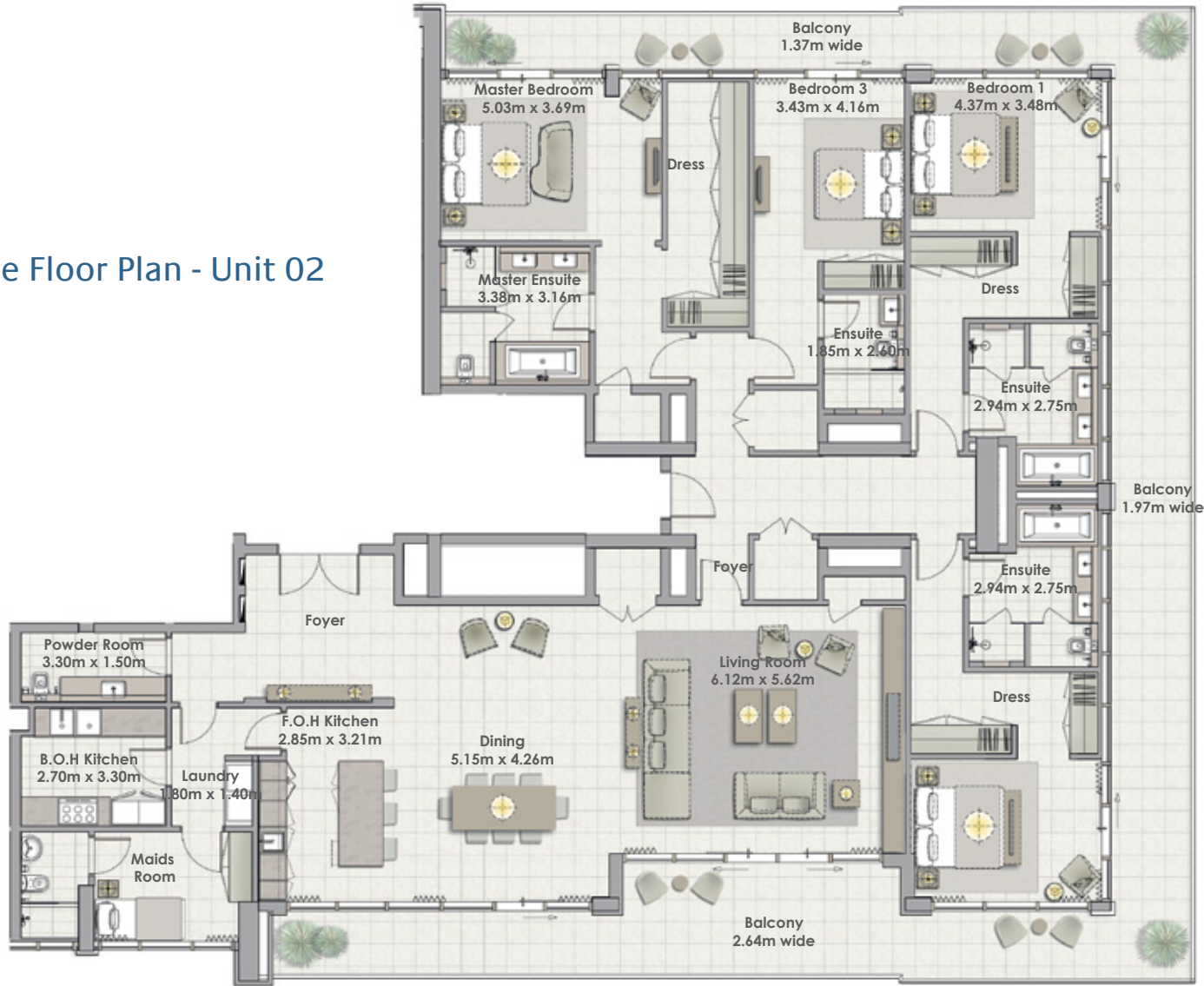
Building 01
4 BEDROOM
UNIT 01/ LEVELS 21



| | |
|--------------|-----------------------------|
| Suite Area | 331.27 Sqm. / 3565.76Sqft. |
| Balcony Area | 101.43 Sqm. / 1091.78Sqft. |
| Total Area | 432.70 Sqm. / 4657.54 Sqft. |

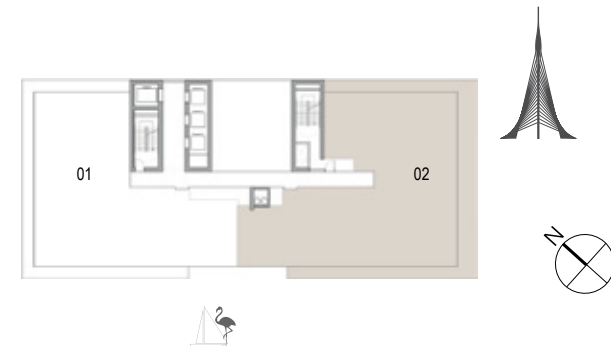
FLOOR PLAN 1. All dimensions are in imperial and metric, and measured from finish to finish excluding construction tolerances. 2. All materials, dimensions, and drawings are approximate only. 3. Information is subject to change without notice, at developer's absolute discretion. 4. Actual area may vary from the stated area. 5. Drawings not to scale. 6. All images used are for illustrative purposes only and do not represent the actual size, features, specifications, fittings, and furnishings. 7. The developer reserves the right to make revisions / alterations, at its absolute discretion, without any liability whatsoever.

Building 01
Level 21 Penthouse Floor Plan - Unit 02



Building 01
4 BEDROOM
UNIT 02/ LEVELS 21

| | |
|--------------|-----------------------------|
| Suite Area | 291.70 Sqm. / 3139.83 Sqft. |
| Terrace Area | 69.87 Sqm. / 752.07Sqft. |
| Total Area | 361.57 Sqm. / 3891.90 Sqft. |



FLOOR PLAN 1. All dimensions are in imperial and metric, and measured from finish to finish excluding construction tolerances. 2. All materials, dimensions, and drawings are approximate only. 3. Information is subject to change without notice, at developer's absolute discretion. 4. Actual area may vary from the stated area. 5. Drawings not to scale. 6. All images used are for illustrative purposes only and do not represent the actual size, features, specifications, fittings, and furnishings. 7. The developer reserves the right to make revisions / alterations, at its absolute discretion, without any liability whatsoever.